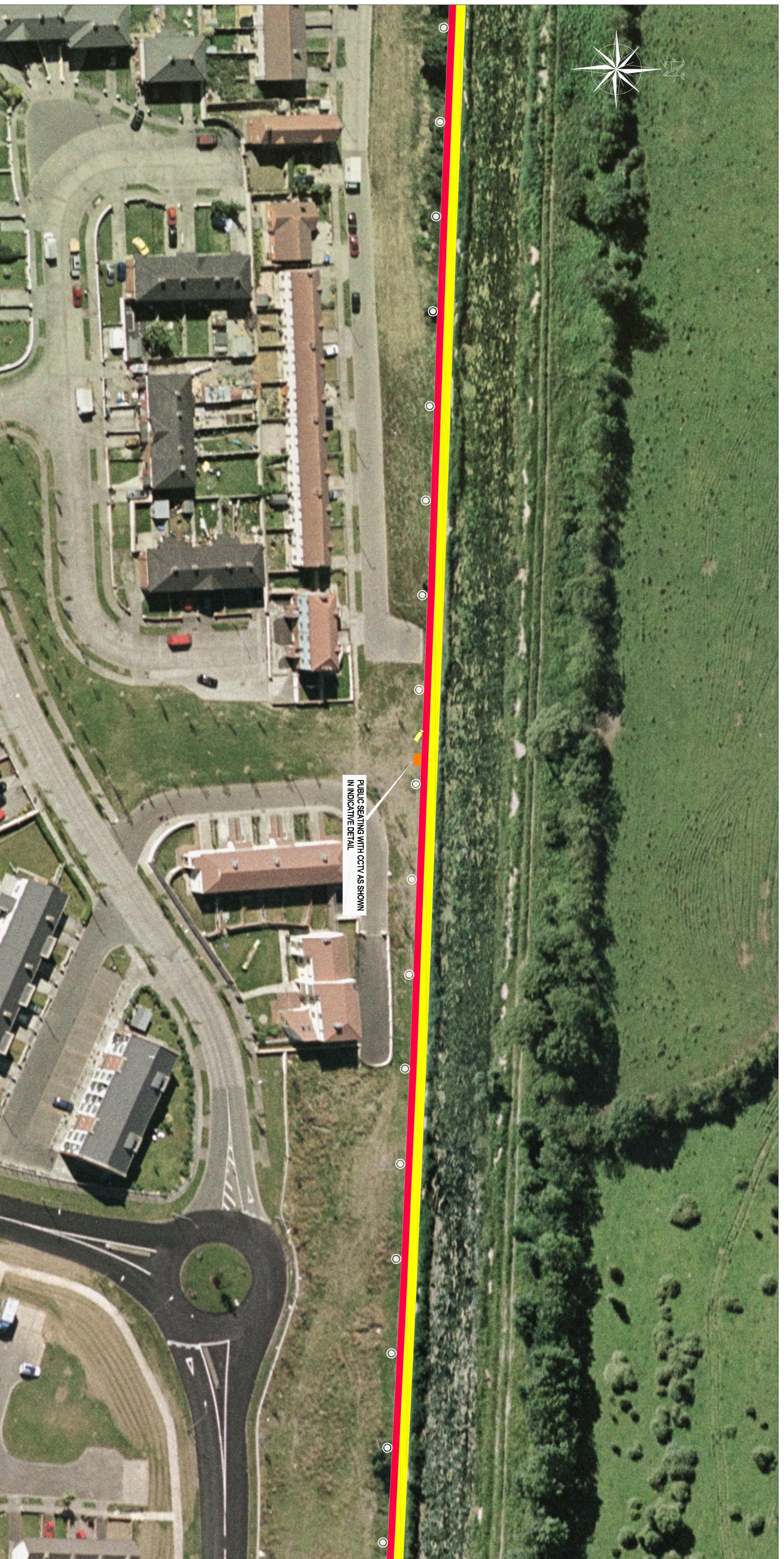




# PROPOSED GREEN PEDESTRIAN AND CYCLE ROUTE ALONG THE GRAND CANAL FROM 12th LOCK TO INCHICORE INCORPORATING 110KV DUCTING

## PUBLIC DISPLAY - SHEET 7 OF 27



**Legend :**

- Proposed Footpath
- Proposed cyclepath
- Proposed Public Lighting
- Proposed CCTV
- Proposed Public Seating

**Comhairle Contae Atha Clath Theas**  
South Dublin County Council  
Planning & Development Ad 2007  
Planning & Development Regulations 2007-2008 (Part 8 Procedure)  
Display of proposed development for public comment

**Proposed Green and Pedestrian/Cycle Route along the Grand Canal from 12th Lock to Inchicore incorporating 110kV Ducting**  
Pursuant to the requirements of the above, notice is hereby given of the proposed construction by South Dublin County Council of the above scheme.

The proposed works will comprise of the following:

1. The construction of 849m of pedestrian and cycleway along the eastern bank of the Grand Canal from the Naas Road at Inchicore to 12th Lock Road at George's Dock.
2. The proposed new pedestrian footpath will be 2.0m wide and will run parallel and adjacent to a minimum 1.5m cycleway. The cycleway will widen to 2.0m where possible.
3. The provision of public lighting and security CCTV along the entire length of the route.
4. Provision of ducting for Public Lighting, CCTV, 110kV power cables and communication cables together with associated connection and pulling chambers.
5. The provision of public amenity seating and planters along the route.
6. Construction of designated lighting poles along the route.
7. The reconfiguration of access ramps to allow improved access to and from the route from Park West Avenue, Finghill Road and the Oliver Rafter Road. Access will be maintained and improved at Finghill Road and 12th Lock Road and 12th Lock Road.
8. The provision of buoys (pedestrian and cycle) crossings at Kilim Lock Road and Kileen Road.
9. The provision for future pedestrian bridges at key points along the route to link to future developments on lands to the north of the canal.
10. The provision of upgraded landscaping with native planting.
11. Provision of the appropriate directional signage and markings.

Pairs & particulars of the proposed development will be on display from 17th May 2007 until 14th June 2007 at:

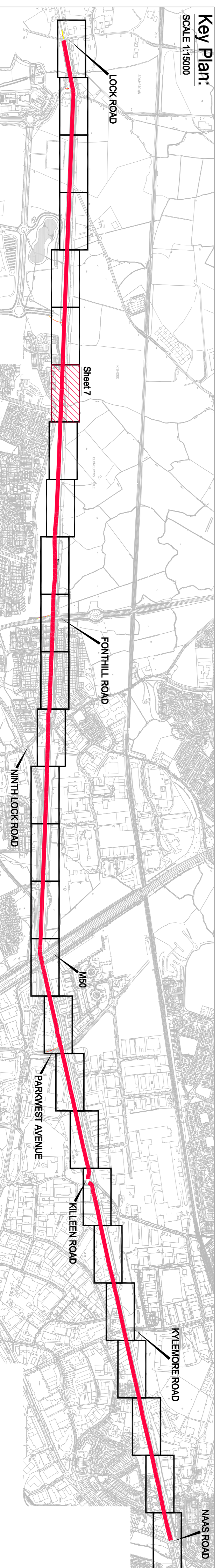
South Dublin County Council, County Hall, Tallaght, Dublin 24  
Monday - Friday 9.30 am - 12.45 pm 2.00 pm - 4.30 pm  
and  
South Dublin County Council Civic Office, Crustalin, Dublin 22  
Monday - Friday 9.30 am - 12.45 pm 2.00 pm - 4.00 pm  
Or by email to [mehin@sdcc.ie](mailto:mehin@sdcc.ie)

**Senior Executive Officer**  
Development Department, South Dublin County Council, County Hall, Tallaght, Dublin 24.  
Or by email to [mehin@sdcc.ie](mailto:mehin@sdcc.ie)

This notice is published for the receipt of submissions or observations with regard to the matter is 5.00 pm on Thursday, 28th June 2007.

I declare that the content of the information does not apply to all records held by South Dublin County Council

Plan:  
SCALE 1:500



Sheet	SOUTH DUBLIN COUNTY COUNCIL		
Drawn by	Director of Economic Development		
Checked by	PROPOSED GREEN PEDESTRIAN AND CYCLE ROUTE ALONG THE GRAND CANAL FROM 12th LOCK TO INCHICORE INCORPORATING 110KV DUCTING		
Date	MAY 2007		
Scale	1:500; AS SHOWN		