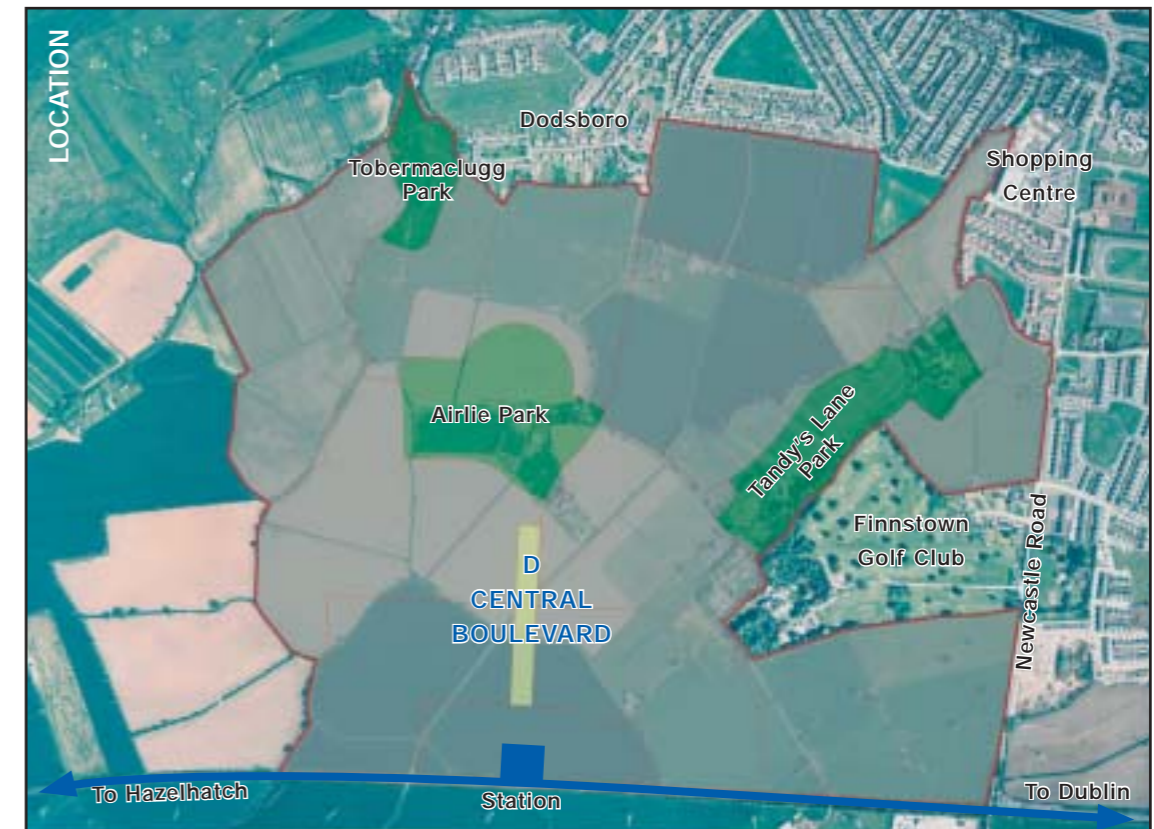


Amenity Area D Central Boulevard



Central Boulevard

Area character type	Major Park
Gross area	11.6 hectares
Net area	10.85 hectares



DIAGRAM DRAWING KEY

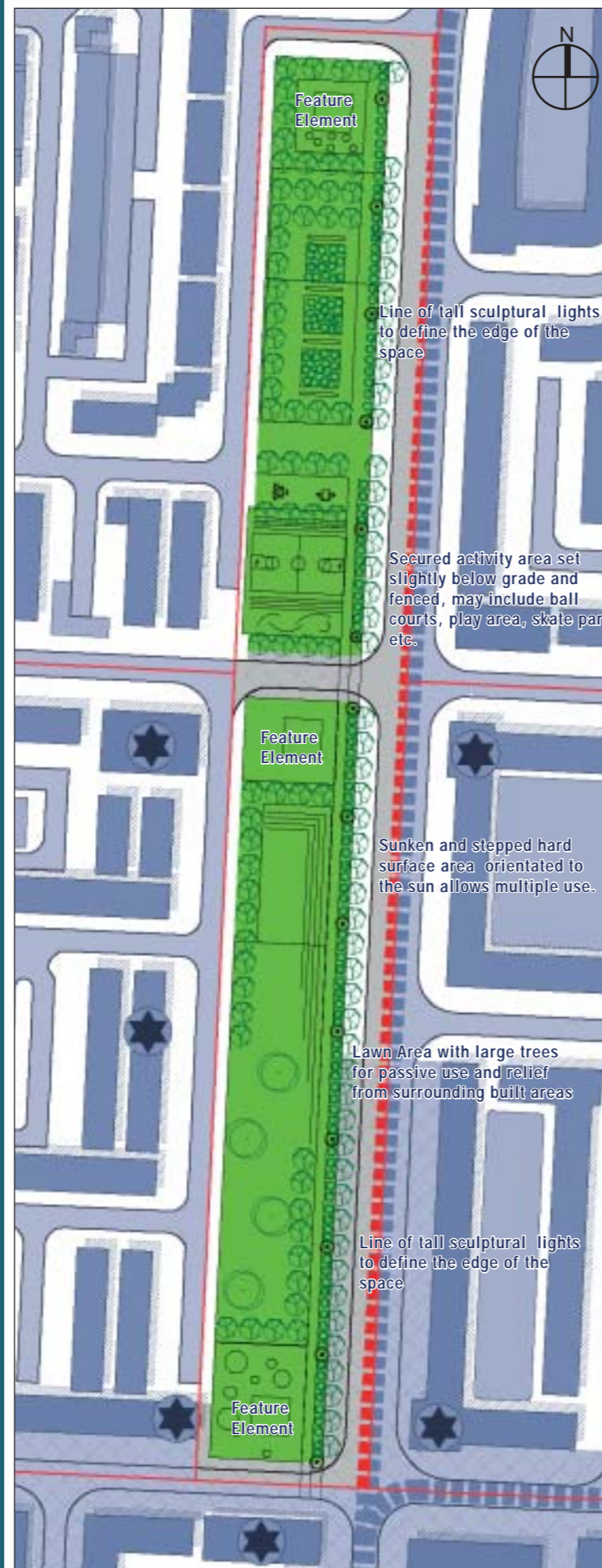
Park Landmarks - Features /Buildings *

Use Zones

- | | |
|--|--|
| 1 Feature buildings and amenity area | 5 Sunken multi use area performance space / Market area etc. orientated to the sun |
| 2 Demonstration gardens or sponsored plant display areas | 6 Possible linked play for younger children |
| 3 Active play area secured ball court and older play areas | 7. Avenue and main pathway lined with hedges and sculptural lighting to create an edge to the space. |
| 4 Kiosk / Information point / Feature | |

Key - Main Plan

- Boundary of Gross Development Area
- Hard Landscaped Public Space
- Public Open Space
- Established Tree to be Preserved



Indicative Park Layout 0 50 100 m



Features to create focal points



Light features to define edge of open space



Create pockets of formal garden areas which may be sponsored by local interest groups



Avenue trees and pedestrian routes to eastern edge of open space

DESCRIPTION OF PARK

A spine of open space linking Airlie park to the central area. The space will be for pedestrian use and will be buffered from surrounding roads by appropriate planting and feature elements.

The space will be designed to incorporate a number of linked but differently themed areas for various uses. Play elements will be incorporated along with active spaces but opportunities will also be there for passive areas. By creating various rooms within the overall spine areas can be versatile both in design and management terms.