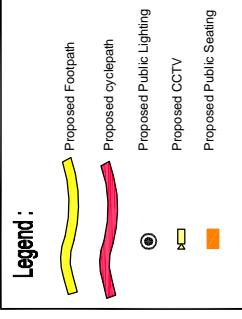
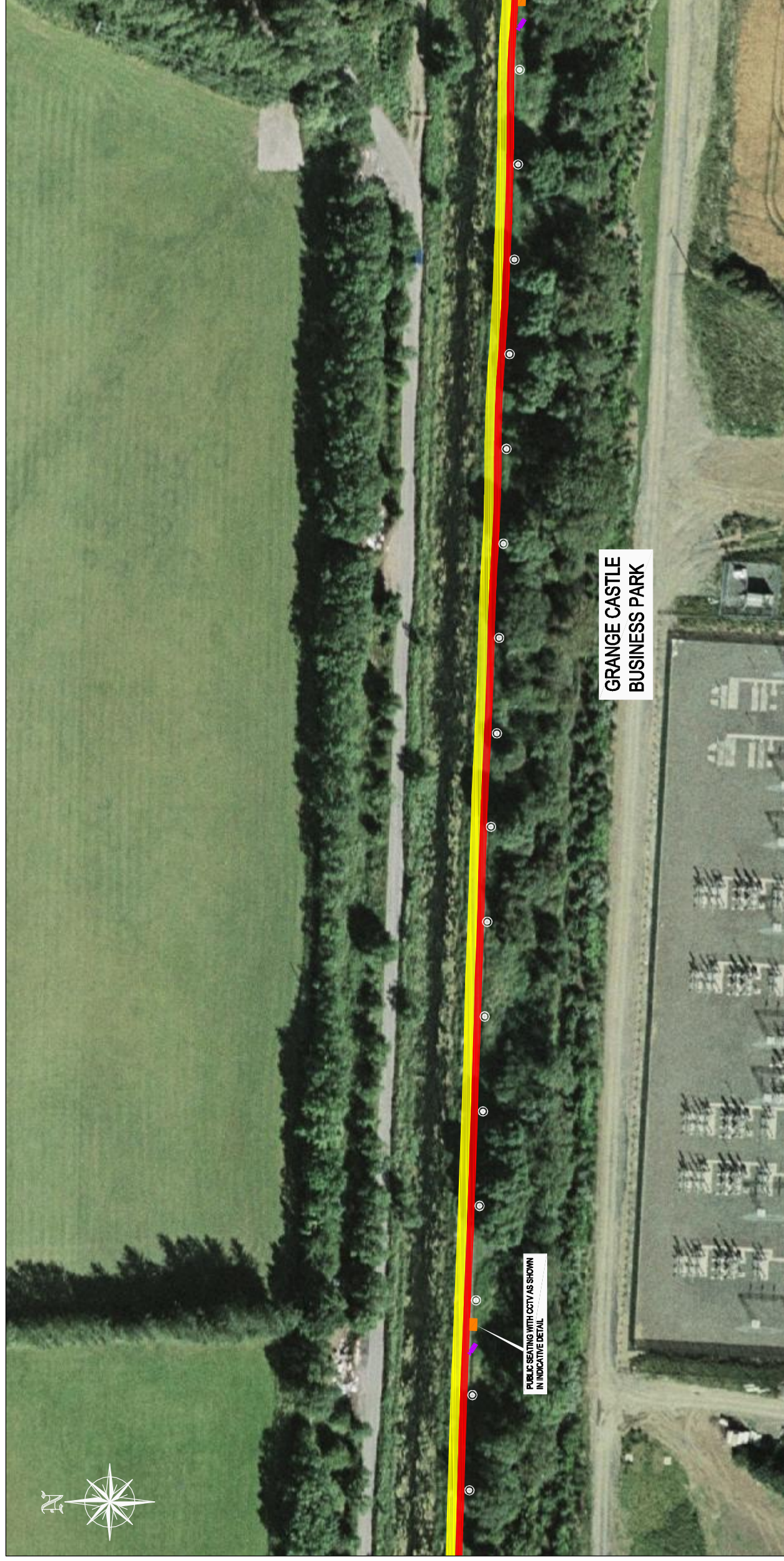




# PROPOSED GREEN PEDESTRIAN AND CYCLE ROUTE ALONG THE GRAND CANAL FROM BROWNSTOWN TO INCHICORE INCORPORATING 110KV DUCTING

PUBLIC DISPLAY - SHEET 11 OF 35



**Comhairle Contae Atha Cliath Theas**  
South Dublin County Council  
Planning & Development Act 2000  
Display of proposed development for public comment  
Proposed Green and Pedestrian Cycle Route along the Grand Canal from Brownstown to Inchicore incorporating 110kV Ducting  
Pursuant to the requirements of the above, notice is hereby given of the proposed construction by South Dublin County Council of the above scheme.

The proposed works will comprise of the following:

- The construction of 11.015 m of pedestrian and cycleway along the southern towpath of the Grand Canal from the Nauls Road at Inchicore to Brownstown.
- The proposed new pedestrian footpath will be 2.0m wide and will run parallel and adjacent to a minimum 1.5m cycleway. The cycleway will widen to 2.0m where possible.
- The provision of public lighting and security CCTV along the entire length of the route.
- Provision of ducting for Public Lighting, CCTV, 110kV power cables and communication cables together with associated connection and pulling chambers.
- The provision of public urinals and benches along the route.
- Construction of designated seating points along the route.
- The construction of access ramps to allow improved access to and from the route from Park West Avenue, Fennell Road and the Outer Relief Road. Access will be maintained and improved at Kilven Road and North Lock Road and 12th Lock Road.
- The provision of buscan (pedestrian and cycle) crossings at North Lock Road and Kilven Road.
- The provision for future pedestrian bridges at key points along the route to link to future developments on lands to the north of the canal.
- The provision of upgraded landscaping with native plantings.
- Provision of the appropriate directional signage and markings.

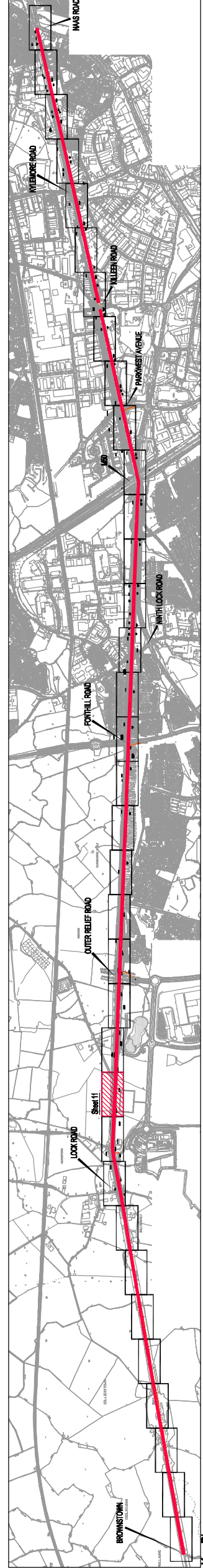
Plans & particulars of the proposed development will be on display from 10th July 2007 until 21st August 2007 at:  
South Dublin County Council, County Hall, Tallaght, Dublin 24.  
Monday - Friday 9.30 am - 12.45 pm 2.00 pm - 4.30 pm  
and  
South Dublin County Council, Chives Office, Clonsilla, Dublin 22.  
Monday - Friday 9.30 am - 12.45 pm 2.00 pm - 4.00 pm

Submissions or observations with respect to the proposed development dealing with the proper planning and sustainable development of the area, in which the development would be situated may be made in writing to the:

Senior Executive Officer,  
Development Department, South Dublin County Council, County Hall, Tallaght, Dublin 24,  
Or by email to [development@csa.ie](mailto:development@csa.ie)  
The latest date for the receipt of submissions or observations with regard to this matter is 5.00 pm on Tuesday, 4th September, 2007

It should be noted that the Freedom of Information Acts apply to all records held by South Dublin County Council

Plan:  
SCALE 1:500  
0 10m 20m



Key Plan:  
SCALE: NTS

Client	SOUTH DUBLIN COUNTY COUNCIL
C/O	Director of Economic Development
Project	PROPOSED GREEN PEDESTRIAN AND CYCLE ROUTE ALONG THE GRAND CANAL FROM BROWNSTOWN TO INCHICORE INCORPORATING 110kV DUCTING
Drawn By	WDE
Date	JUNE 2007
Checked By	PT
Scale	AS SHOWN
Draw No.	05_106_211
DETAIL PLANS SHEET 11 OF 35	