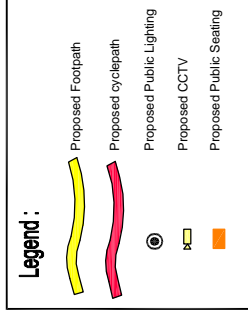
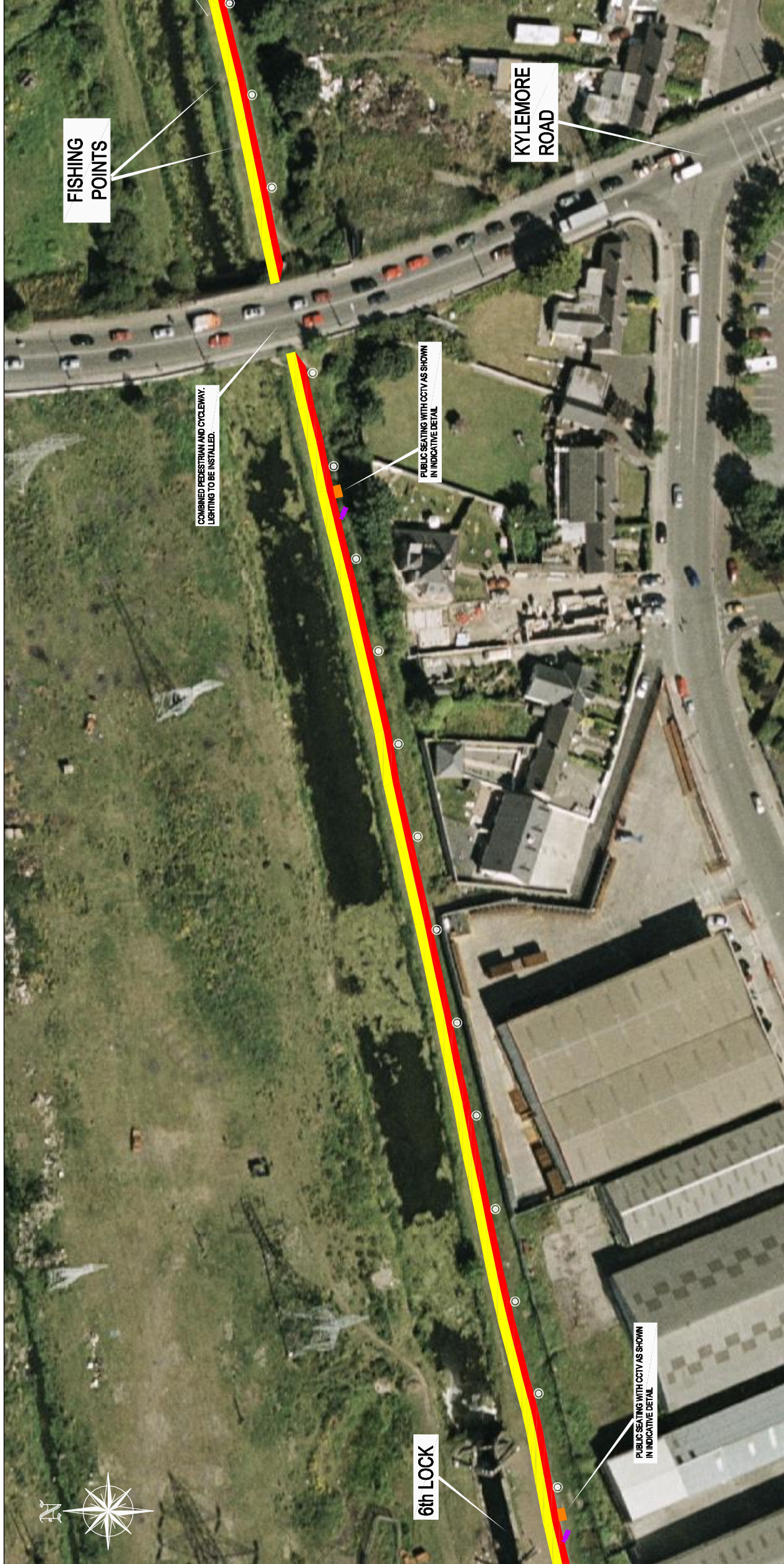




PROPOSED GREEN PEDESTRIAN AND CYCLE ROUTE ALONG THE GRAND CANAL FROM BROWNSTOWN TO INCHICORE INCORPORATING 110KV DUCTING

PUBLIC DISPLAY - SHEET 31 OF 35



Comhairle Contae Átha Cliath Theas
South Dublin County Council
Planning & Development Act 2000
Planning & Development Regulations 2001-2007 (Part 8 Procedure)
Display of proposed development for public comment
Proposed Green and Pedestrian Cycle Route along the Grand Canal from Brownstown to Inchicore incorporating 110kV Ducting
Pursuant to the requirements of the above, notice is hereby given of the proposed construction by South Dublin County Council of the above scheme.

The proposed works will comprise of the following:

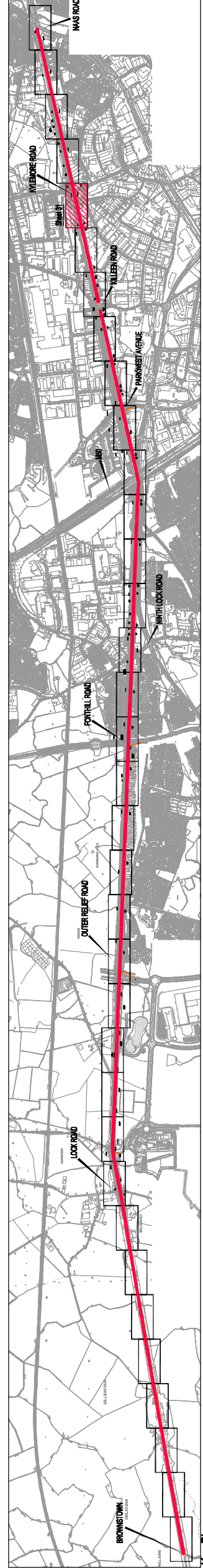
1. The construction of 11,015 m of pedestrian and cycleway along the southern towpath of the Grand Canal from the Naas Road at Inchicore to Brownstown.
2. The proposed new pedestrian footpath will be 2.0m wide and will run parallel and adjacent to a minimum 1.5m cycleway. The cycleway will widen to 2.0m where possible.
3. The provision of public lighting and security CCTV along the entire length of the route.
4. Provision of ducting for Public Lighting, CCTV, 110kV power cables and communication cables together with associated connection and pulling chambers.
5. The provision of public amenity seating and bins along the route.
6. Construction of designated fishing points along the route.
7. The construction of access ways to allow improved access to and from the route from Park West Avenue, Fonthill Road and the O'Leary Retail Road. Access will be maintained and improved at Kilwin Road and North Lock Road and 12th Lock Road.
8. The provision of buscan (pedestrian and cycle) crossings at North Lock Road and Kilwin Road.
9. The provision for future pedestrian bridges at key points along the route to link to future developments on lands to the north of the canal.
10. The provision of upgraded landscaping with native plantings.
11. Provision of the appropriate directional signage and markings.

Plans & particulars of the proposed development will be on display from 10th July 2007 until 21st August 2007 at:
South Dublin County Council, County Hall, Tallaght, Dublin 24.
Monday - Friday 9.30 am - 12.45 pm 2.00 pm - 4.30 pm
and
South Dublin County Council, Clonsilla, Clonsilla, Dublin 22
Monday - Friday 9.30 am - 12.45 pm 2.00 pm - 4.00 pm
Submissions or observations with respect to the proposed development dealing with the proper planning and sustainable development of the area, in which the development would be situated may be made in writing to the:

Senior Executive Officer,
Development Department, South Dublin County Council, County Hall, Tallaght, Dublin 24,
Or by email to development@sdcc.ie
The latest date for the receipt of submissions or observations with regard to this matter is 5.00 pm on Tuesday, 4th September, 2007

It should be noted that the Freedom of Information Acts apply to all records held by South Dublin County Council

Plan:
SCALE 1:500



Key Plan:
SCALE: NTS

Client:	SOUTH DUBLIN COUNTY COUNCIL
C.D.:	Director of Economic Development
Project:	PROPOSED GREEN PEDESTRIAN AND CYCLE ROUTE ALONG THE GRAND CANAL FROM BROWNSTOWN TO INCHICORE INCORPORATING 110KV DUCTING
Drawn By:	WDE
Checked By:	PT
Date:	JUNE 2007
Scale:	AS SHOWN
Draw No.:	05_106_232
DETAIL PLANS SHEET 31 OF 35	