

Amenity Area A Tandy's Lane Park



Tandy's Lane Park

| | |
|---------------------|--------------|
| Area character type | Major Park |
| Gross area | 8.0 hectares |
| Net area | 7.7 hectares |



DIAGRAM DRAWING KEY

Park Landmarks - Features / Buildings *

Access >

Use Zones

- | | |
|--|--|
| <p>1 Boundary with adjoining Properties Establish planting appropriate to surrounding mature woodland areas</p> <p>2 Arboretum Zone Large Specimen Trees to complement surrounding mature landscapes</p> | <p>3 Feature Zone Seating and Feature Area</p> <p>4 Retained Tree and Hedgerows Retain and reinforce mature hedgerow trees</p> |
|--|--|

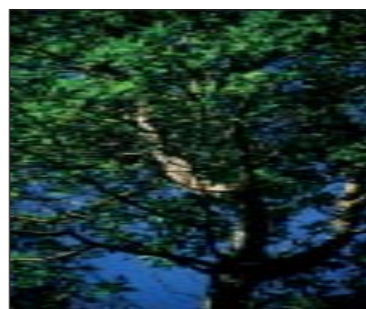
Key - Main Plan

Boundary of Gross Development Area

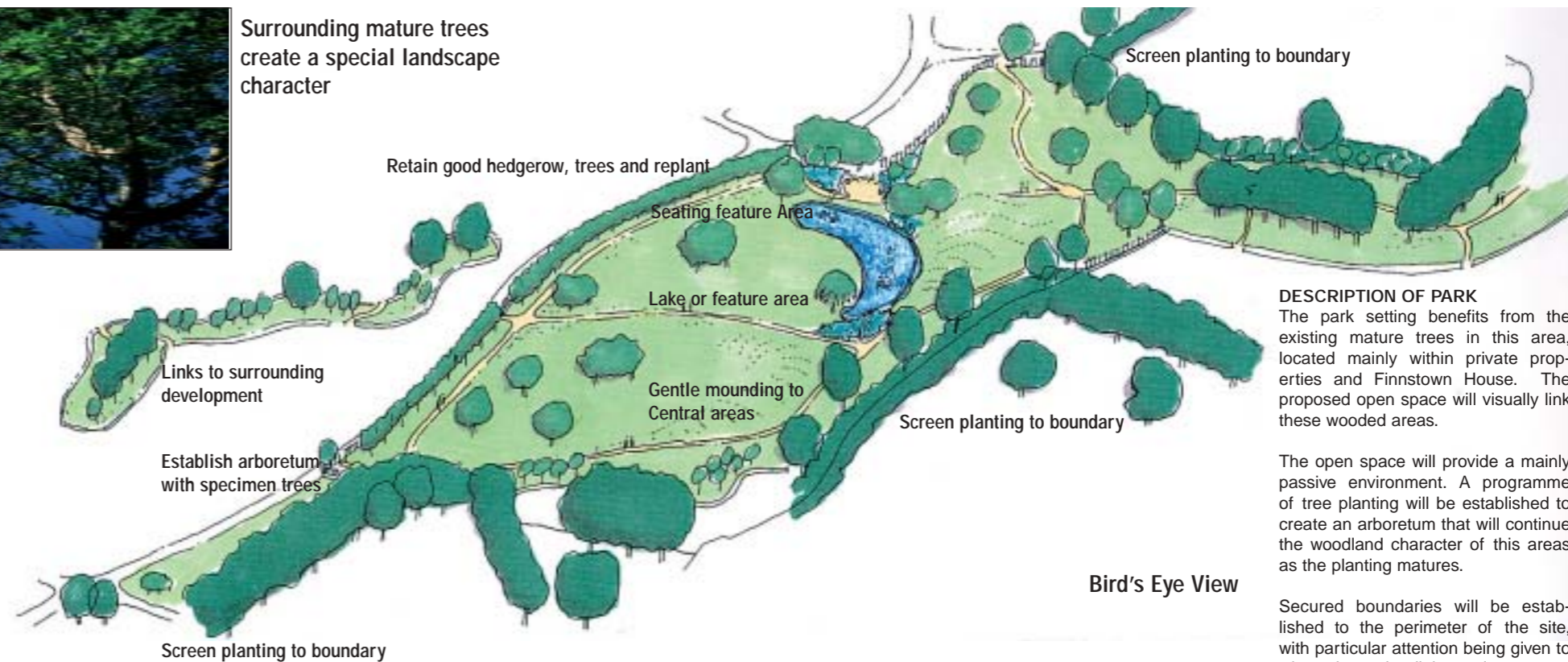
Public Open Space

Established Tree to be Preserved

Protected Structures not included in the Planning Scheme



Surrounding mature trees create a special landscape character

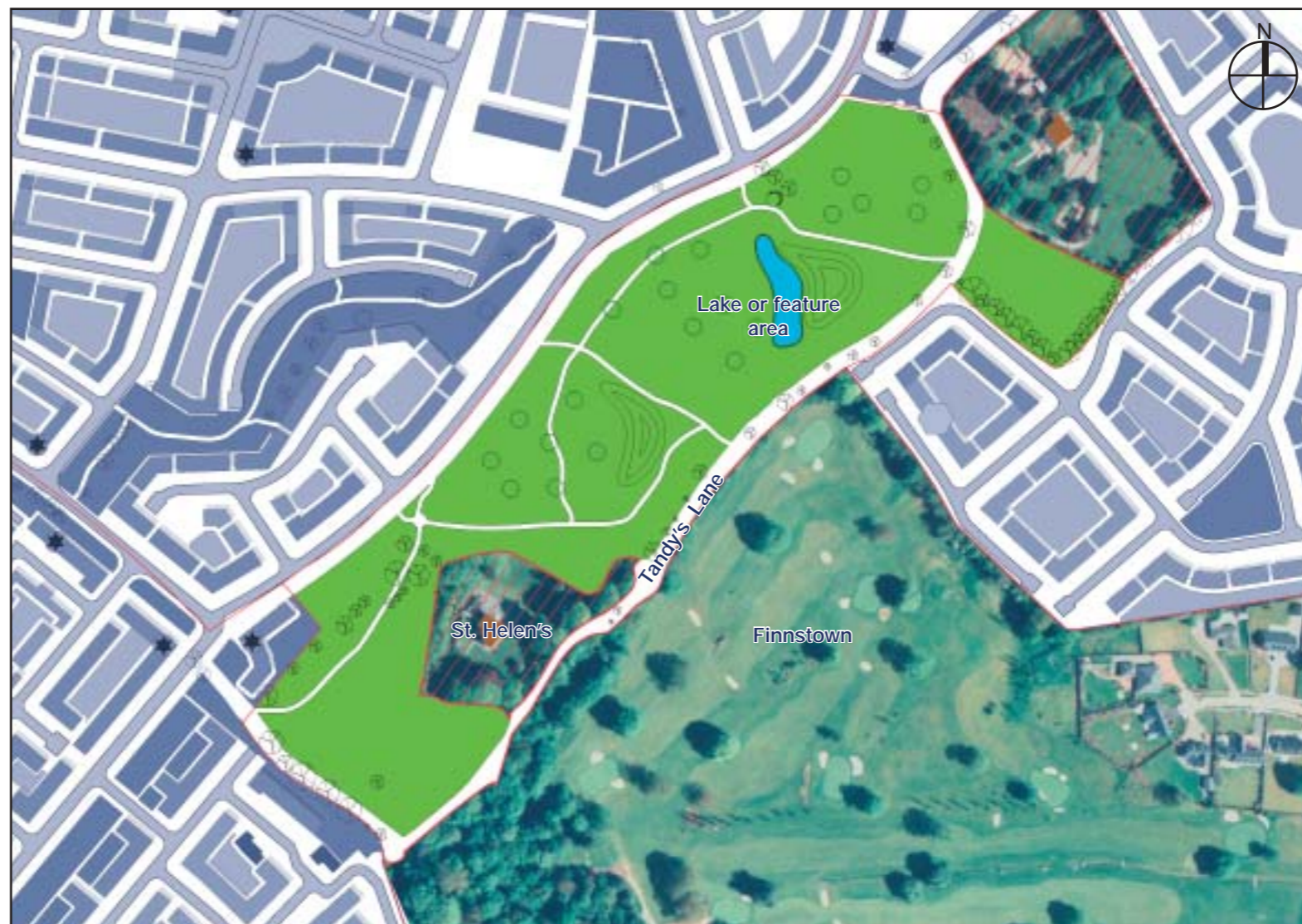


Bird's Eye View

DESCRIPTION OF PARK
The park setting benefits from the existing mature trees in this area, located mainly within private properties and Finnstown House. The proposed open space will visually link these wooded areas.

The open space will provide a mainly passive environment. A programme of tree planting will be established to create an arboretum that will continue the woodland character of this areas as the planting matures.

Secured boundaries will be established to the perimeter of the site, with particular attention being given to where the park adjoins main transport routes.



Indicative Park Layout

0 50 100 200 300 m



Seasonal Planting To Key Areas



Seating / Feature Areas



Seasonal Planting To Key Areas