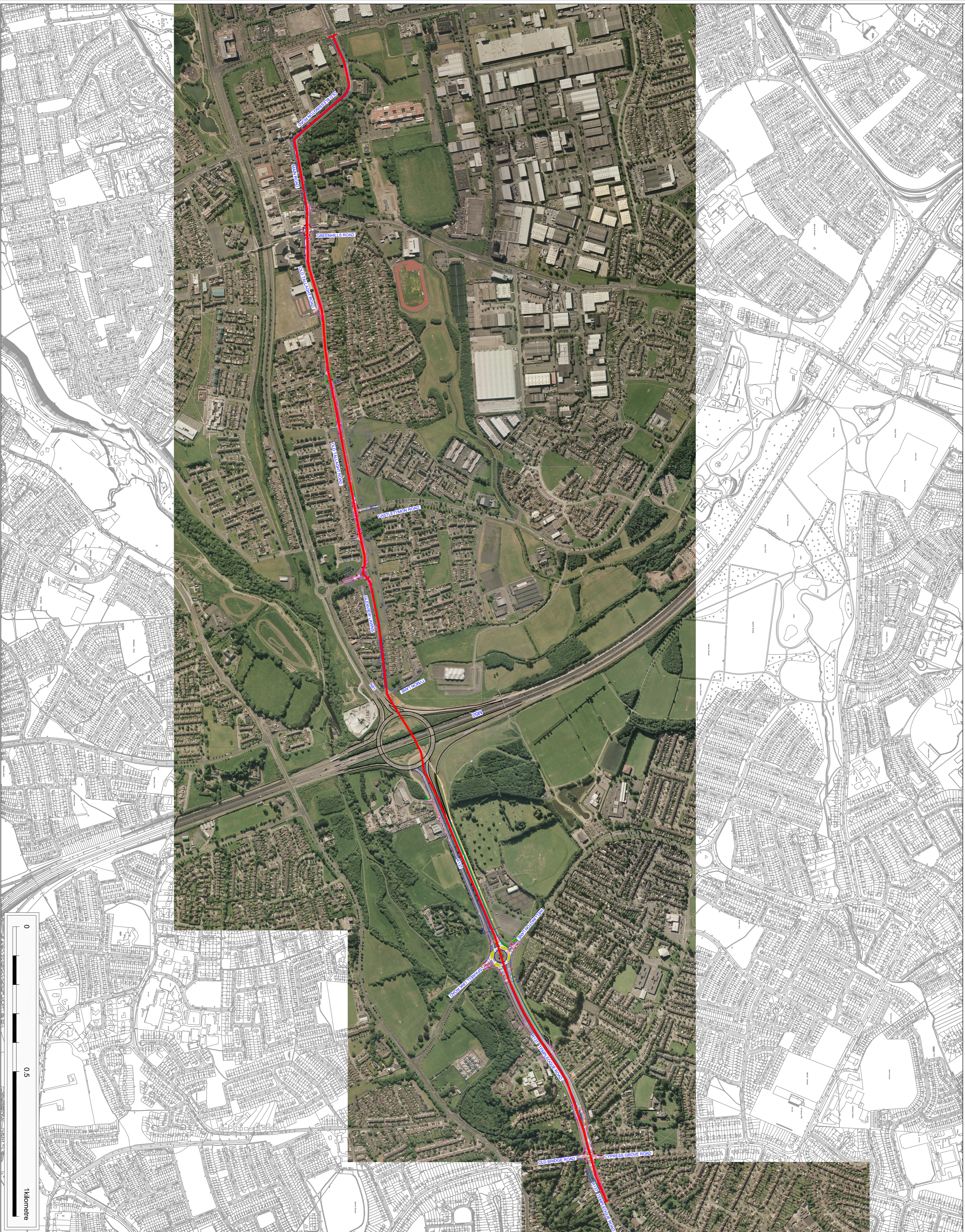


TALLAGHT TO TEMPLEOGUE CYCLE ROUTE SCHEME - PHASE 1

This drawing is produced using the Irish Grid Geographic Coordinate System

A1





 South Dublin County Council
 National Transport Authority
 T. Walsh
 DIRECTOR OF ROADS AND WATER SERVICES
 J. Mc Loughlin, B.E., MBA, CENG, FIEI
 SENIOR ENGINEER


 Clifton Scannell Emerson
 Associates Limited
 Consulting Engineers
 Seafort Lodge,
 Castlewood Avenue,
 Blackrock, Co. Dublin,
 Ireland.
 T. +353 1 288 8006
 F. +353 1 283 3486
 E. info@csa.ie
 W. www.csa.ie

Client: SOUTH DUBLIN COUNTY COUNCIL
 Project: TALLAGHT TO TEMPLEOGUE CYCLE ROUTE SCHEME PHASE 1
 Drawing Title: OVERALL SCHEME LAYOUT SHEET 1 OF 1
 Drawn By: SMP Date: NOVEMBER 2013
 Checked By: PL Scale: NTS @ A1
 Drawing Progress: PUBLIC DISPLAY
 Drawing No.: 12_116_210-A

OSL Licence No.: EN 0042413 © OS/GOVERNMENT OF IRELAND A1 © CSEA 2013 - Rev 00