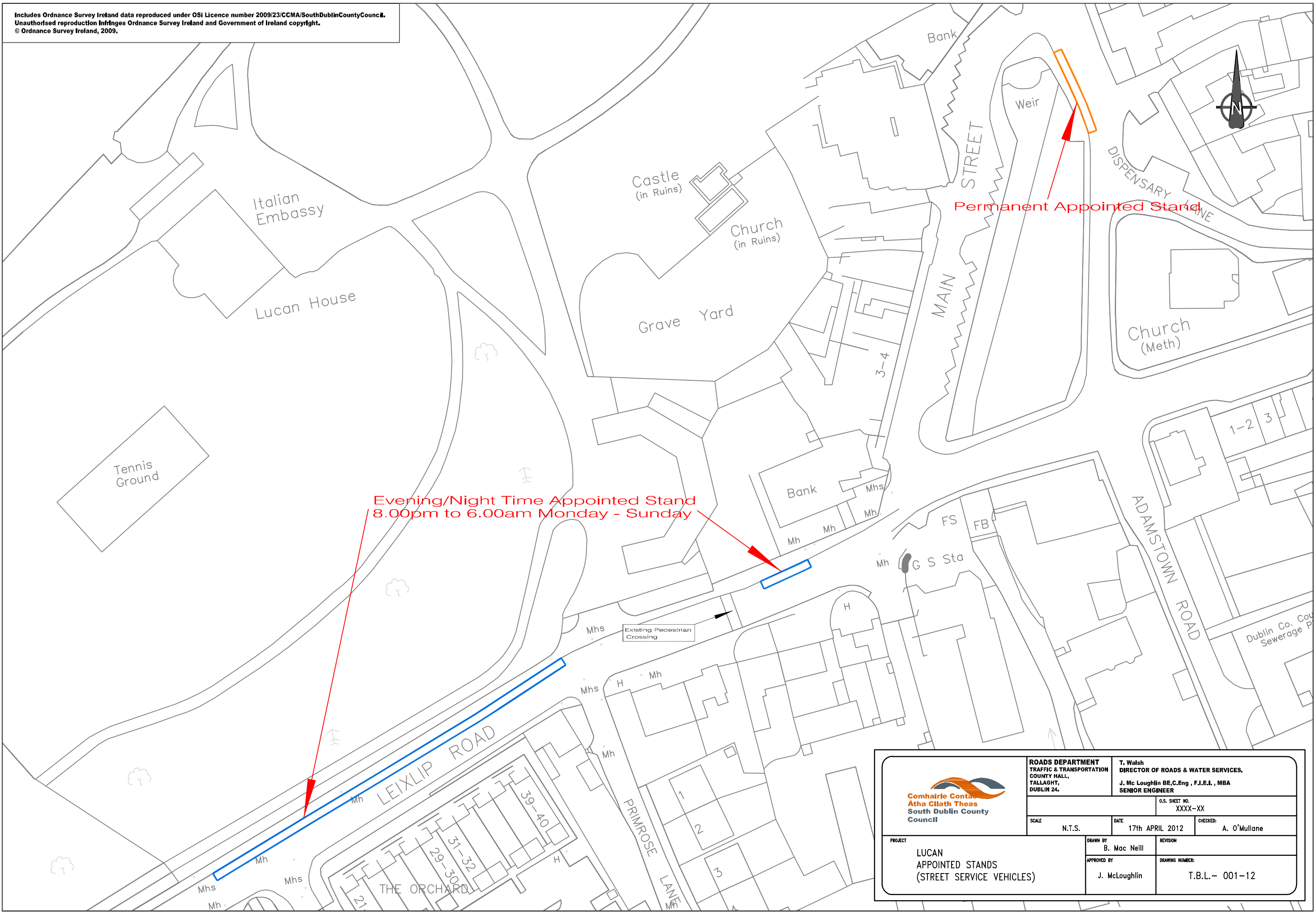



Includes Ordnance Survey Ireland data reproduced under OSI Licence number 2009/23/CCMA/SouthDublinCountyCouncil.  
 Unauthorised reproduction infringes Ordnance Survey Ireland and Government of Ireland copyright.  
 © Ordnance Survey Ireland, 2009.



 <p><b>Comhairle Contae Átha Cliath Theas South Dublin County Council</b></p>	<b>ROADS DEPARTMENT</b> TRAFFIC & TRANSPORTATION COUNTY HALL, TALLAGHT, DUBLIN 24.		<b>T. Walsh</b> DIRECTOR OF ROADS & WATER SERVICES.  <b>J. Mc Loughlin BE,C.Eng , F.I.E.I. , MBA</b> SENIOR ENGINEER	
	SCALE N.T.S.		DATE 17th APRIL 2012	
PROJECT <b>LUCAN          APPOINTED STANDS          (STREET SERVICE VEHICLES)</b>		O.S. SHEET NO. XXXX-XX		CHECKED: A. O'Mullane
		DRAWN BY B. Mac Neill		REVISION
		APPROVED BY J. McLoughlin		DRAWING NUMBER: T.B.L.- 001-12