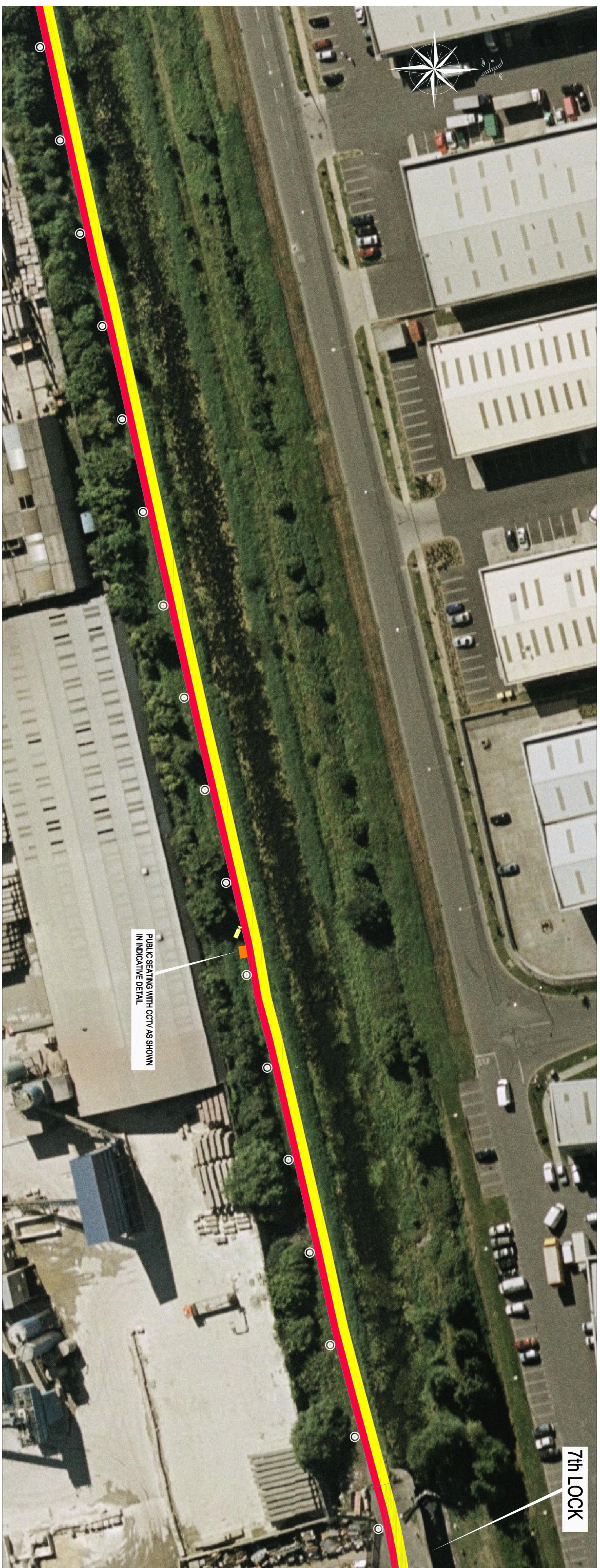


PROPOSED GREEN PEDESTRIAN AND CYCLE ROUTE ALONG THE GRAND CANAL FROM 12th LOCK TO INCHICORE INCORPORATING 110KV DUCTING

PUBLIC DISPLAY - SHEET 20 OF 27



7th LOCK

Legend :	
	Proposed Footpath
	Proposed cyclepath
	Proposed Public Lighting
	Proposed CCTV
	Proposed Public Seating

Comhairle Chontae Atha Cliath Theas
South Dublin County Council
Planning & Development, Act 2000
(Part 8 Procedure)
Display of proposed development for public comment
Proposed Green and Pedestrian Cycle Route along the Grand Canal from 12th Lock to Inchicore incorporating 110kV Ducting
Pursuant to the requirements of the above, notice is hereby given of the proposed construction by South Dublin County Council of the above scheme.

The proposed works will comprise of the following:

1. The construction of 8250 m of pedestrian and cycleway along the southern bank of the Grand Canal from the Heas Road at Inchicore to 12th Lock Road at Gungahouse.
2. The proposed new pedestrian footpath will be 2.0m wide and will run parallel and adjacent to a minimum 1.5m cycleway. The cycleway will widen to 2.0m where possible.
3. The provision of public lighting and security CCTV along the entire length of the route.
4. Provision of seating for Public Lighting, CCTV, 110kV power cables and communication cables together with associated connection and piling services.
5. The provision of public amenity seating and litterbins along the route.
6. Construction of designated fishing points along the route.
7. The construction of access ramps to allow impaired access to and from the route from Frank West Road, 12th Lock Road and 12th Lock Road. Access will be maintained and improved at Dublin Road and 12th Lock Road and 12th Lock Road.
8. The provision of local (pedestrian and cycle) crossings at 11th, Lock Road and Kileen Road.
9. The provision for future pedestrian bridges at key points along the route to link to future developments on lands to the north of the canal.
10. The provision of upgraded landscaping with traffic planting.
11. Provision of the appropriate directional signage and markings.

Plans & particulars of the proposed development will be on display from 17th May 2007 until 14th June 2007 at:

South Dublin County Council, County Hall, Tallaght, Dublin 24.

Monday - Friday 9:30 am - 12:45 pm 2:00 pm - 4:30 pm

and

South Dublin County Council, Civic Office, Condonia, Dublin 22.

Monday - Friday 9:30 am - 12:45 pm 2:00 pm - 4:00 pm

Submissions or observations with respect to the proposed development dealing with the proper planning and sustainable development of the area, in which the development would be situated may be made in writing to the:

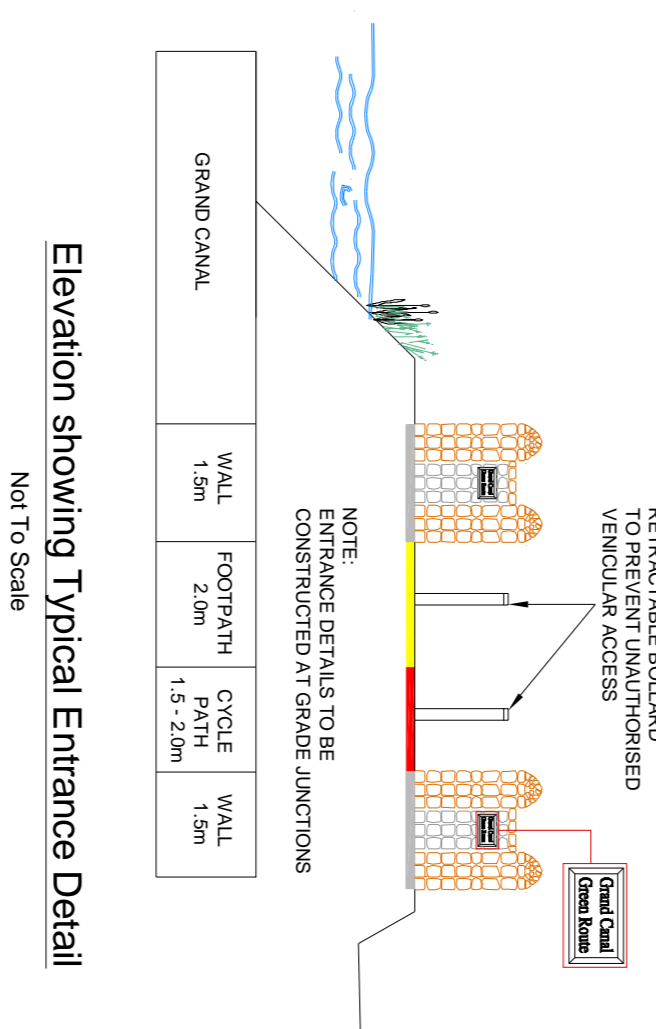
Senior Executive Officer,
Development Department, South Dublin County Council, County Hall, Tallaght, Dublin 24.

Or by email to: meh@sdcc.ie

The latest date for the receipt of submissions or observations with regard to this matter is 5:00 pm on Thursday, 28th June, 2007

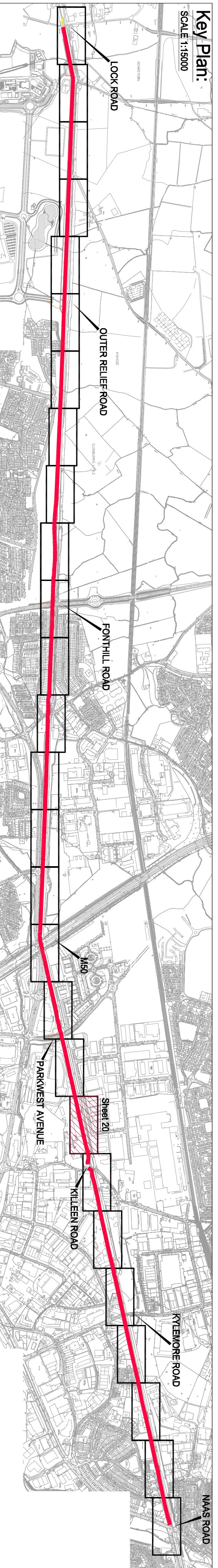
It should be noted that the Freedom of Information Acts applies to all records held by South Dublin County Council.

Plan:
SCALE 1:1500



Elevation showing Typical Entrance Detail

Not To Scale



Client		SOUTH DUBLIN COUNTY COUNCIL	
To		Director of Economic Development	
Project		PROPOSED GREEN PEDESTRIAN AND CYCLE ROUTE ALONG THE GRAND CANAL FROM 12th LOCK TO INCHICORE INCORPORATING 110kV DUCTING	
Drawn by		DETAIL PLANS	
Sheet No.		SHEET 20 OF 27	
Drawn by		LT	
Checked by		PT	
Date		MAY 2007	
Scale		1:500/AS SHOWN	
Draw No.		05_106_220	