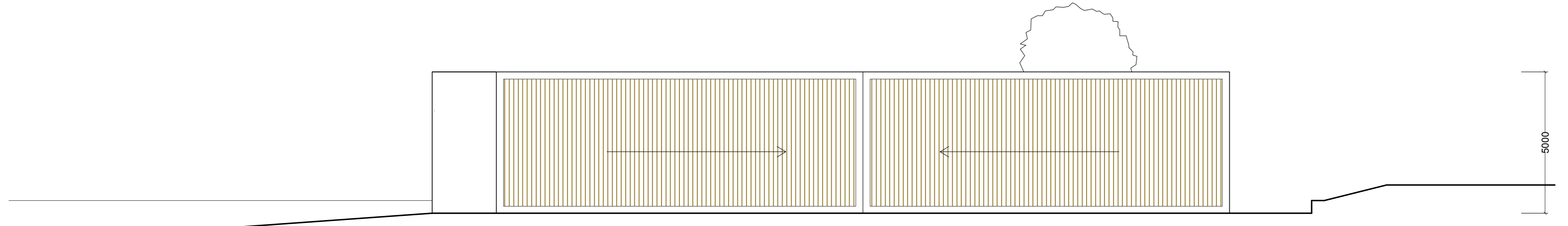
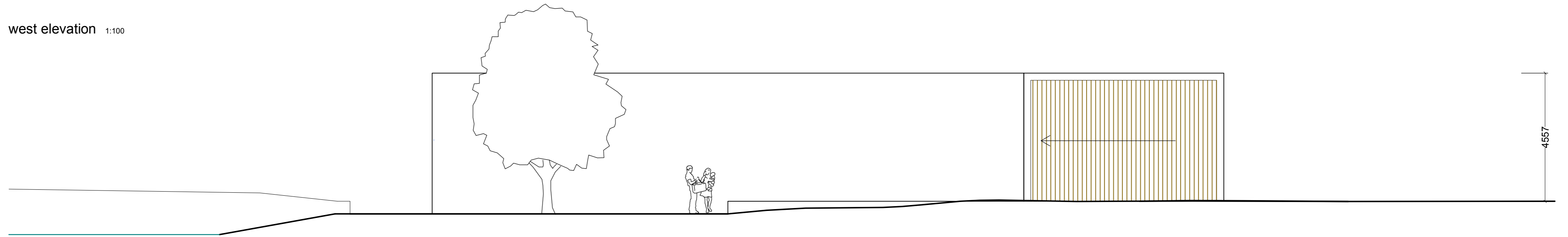


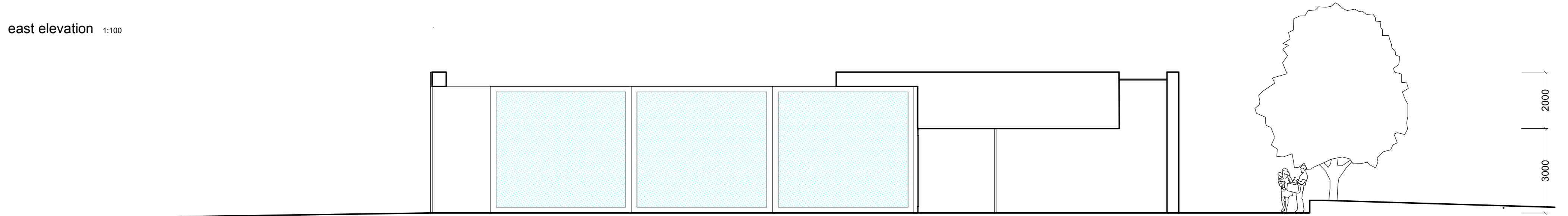
section north-south 1:100



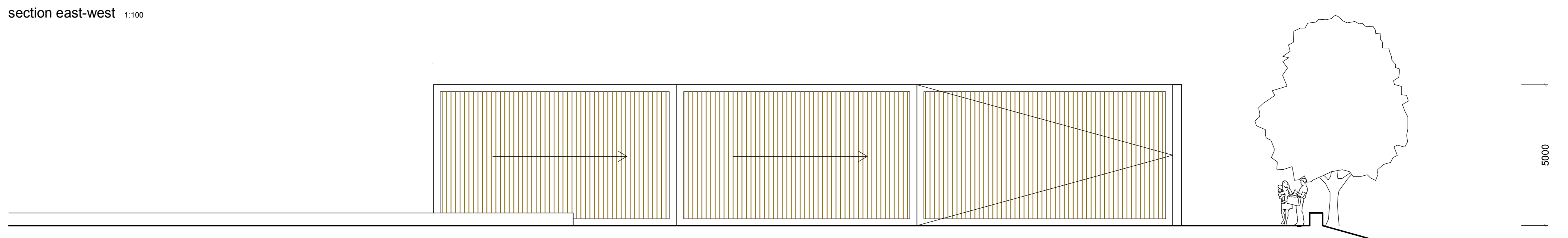
west elevation 1:100



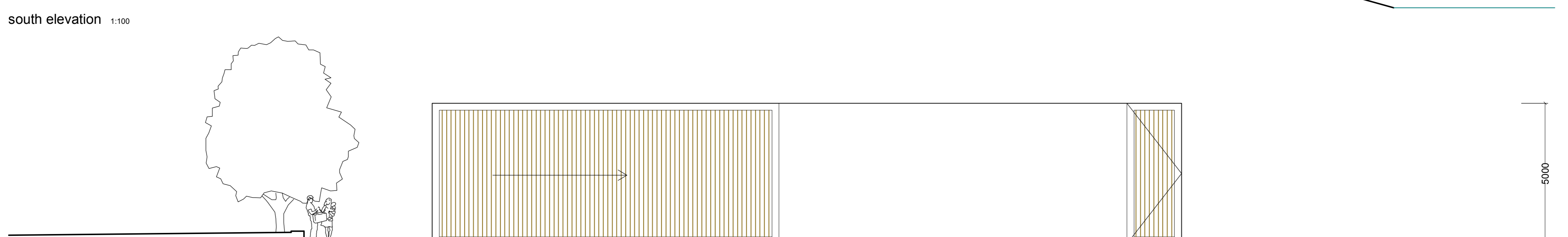
east elevation 1:100



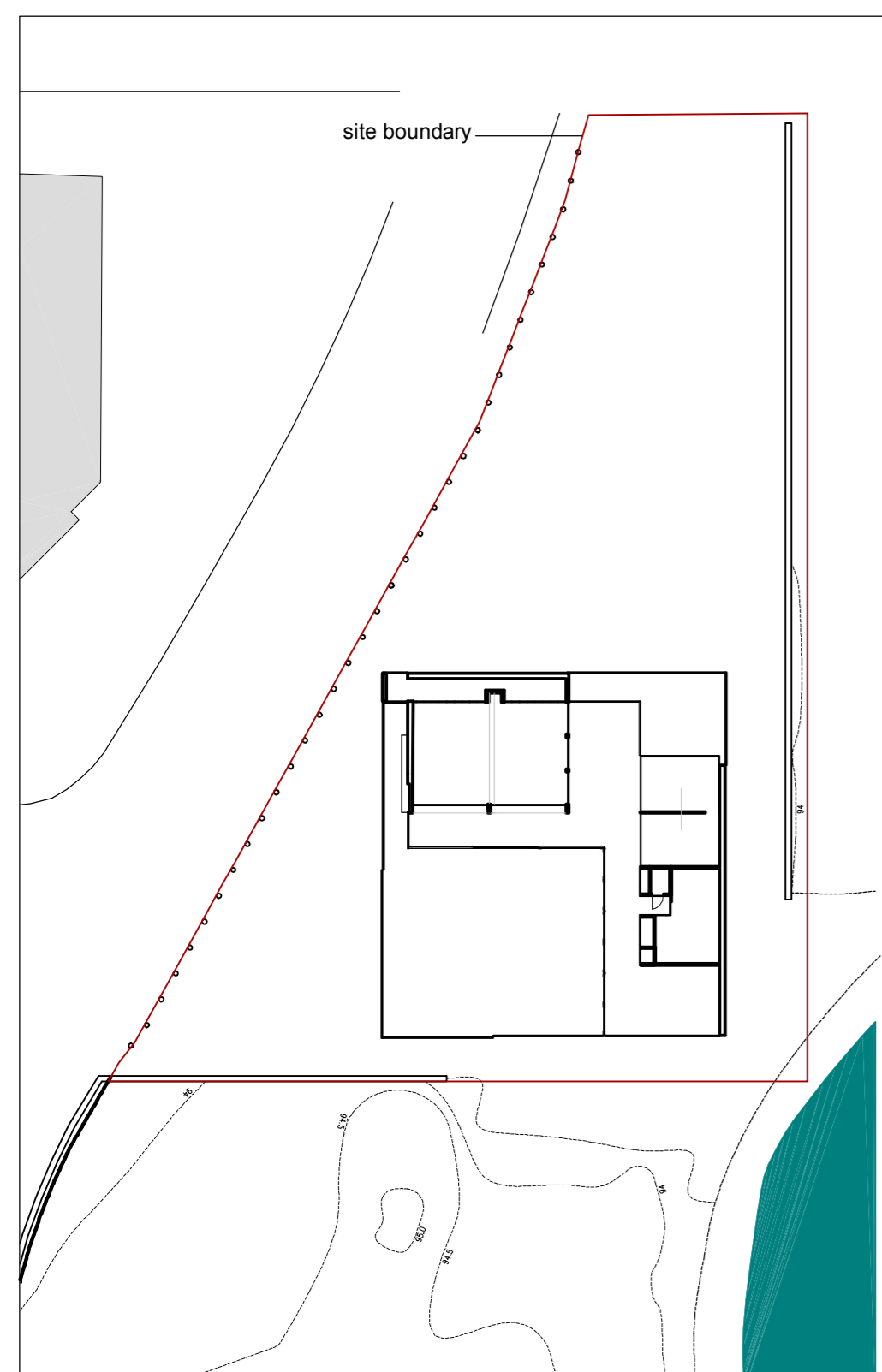
section east-west 1:100



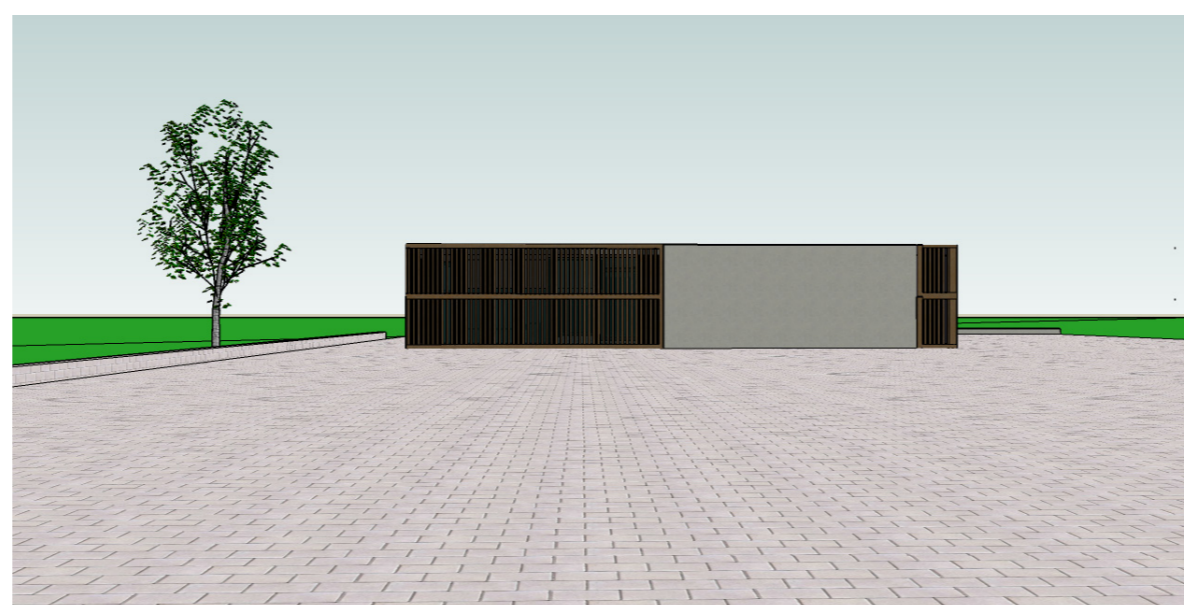
south elevation 1:100



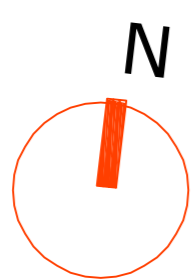
north elevation 1:100



site layout plan 1:500



Community Building
Ballycragh Neighbourhood
Centre



David Dwyer

These drawings have been prepared as part of a submission under part VIII of the planning and development regulation 2001 (SI no. 600 of 2001) on behalf of South Dublin County Council and Ballycragh Community Group

Materials are; render, timber and glass, selected paving and a green roof, conceived as a core concrete building element with moveable timber and glass screens enclosing elements allowing different combinations and permutations of spatial arrangement

Project		Ballycragh Community Centre	
Drawing Title		elevations and site layout plan	
Scale	1:500& 1:100 @A1	Date	08.10.07
Drawn by	David Dwyer	Checked by	David Dwyer
Telephone	+353 1 4737 100 Fax +353 1 4737 098	Website	www.david-dwyer.ie