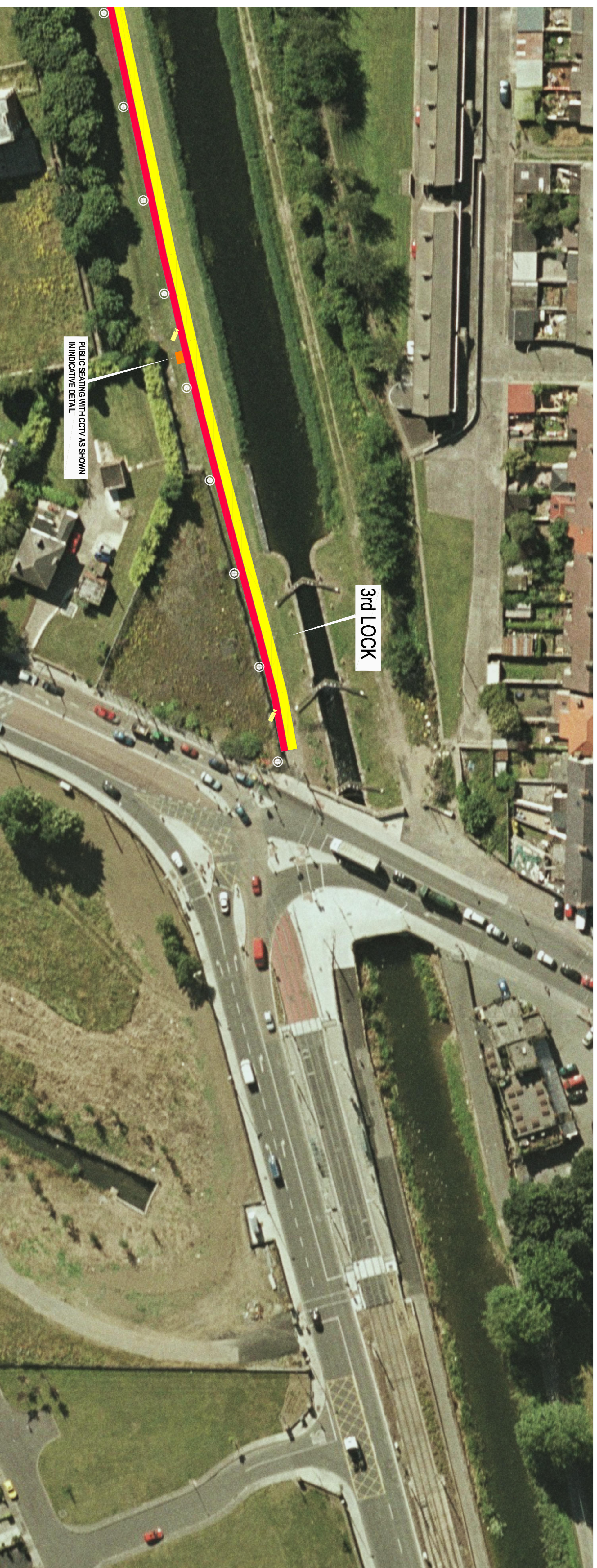
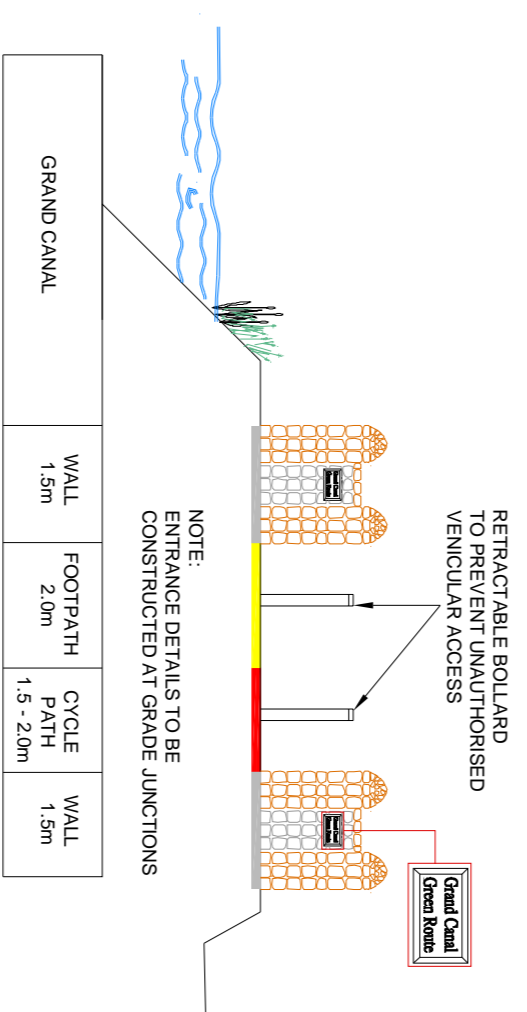


PROPOSED GREEN PEDESTRIAN AND CYCLE ROUTE ALONG THE GRAND CANAL FROM 12TH LOCK TO INCHICORE INCORPORATING 110KV DUCTING

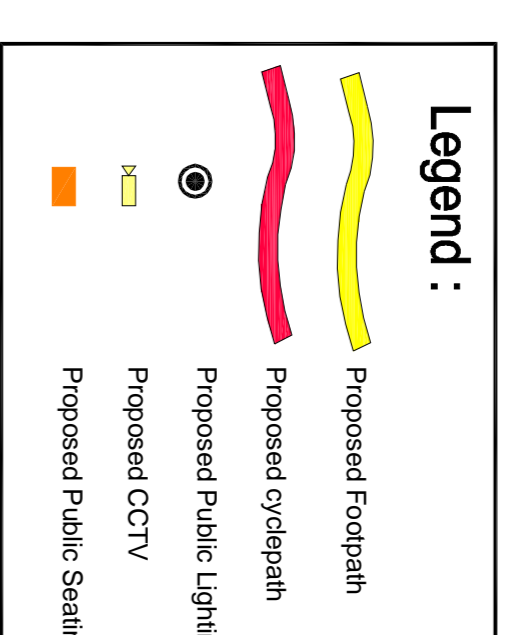
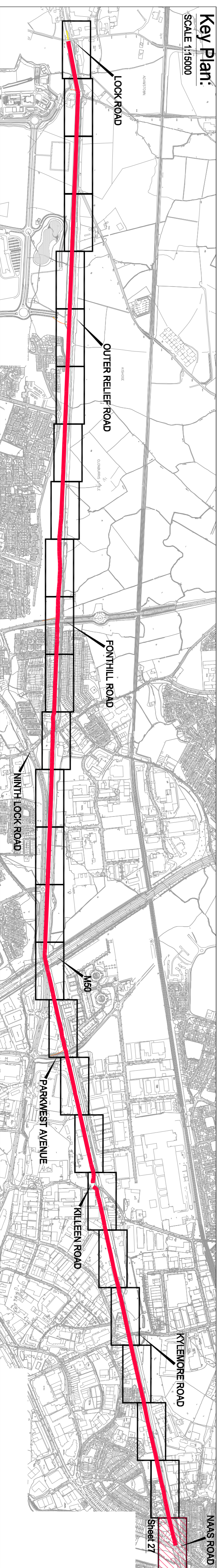
PUBLIC DISPLAY - SHEET 27 OF 27



Plan:
SCALE 1:500



Elevation showing Typical Entrance Detail
Not To Scale



Comhairle Contae Atha Cliath Theas
South Dublin County Council
Planning & Development Act 2000
Development Regulations 2001-2003 (Part 8 Procedure)
Display of proposed development for public comment
Proposed Green and Pedestrian Cycle Route along the Grand Canal from 12th Lock to Inchicore incorporating 110KV Ducting
Pursuant to the requirements of the above, notice is hereby given of the proposed construction by South Dublin County Council of the above scheme.

The proposed works will comprise of the following:

1. The construction of 3450 m of pedestrian and cycleway along the southern bank of the Grand Canal from the Naas Road at Inchicore to 12th Lock Road at George Castle.
2. The proposed new pedestrian footpath will be 2.5m wide and will be parallel and adjacent to a minimum 1.5m cycleway. The cycleway will widen to 2.5m where possible.
3. The provision of public lighting and security CCTV along the entire length of the route.
4. Provision of ducting for Public Lighting, CCTV, 110KV power cables and communication cables together with associated connection and pulling chambers.
5. The provision of public amenity seating and litterbins along the route.
6. Construction of designed fishing points along the route.
7. The construction of access ramps to allow impaired access to and from the route from Park West Avenue, Fonthill Road and the Outer Relief Road. Access will be maintained and improved at Killen Road and Ninth Lock Road and 12th Lock Road.
8. The provision of bougain (pedestrian and cycle) crossings at Killen Lock Road and Killen Road.
9. The provision for future pedestrian bridges at key points along the route to link to future developments on lands to the north of the canal.
10. The provision of upgraded landscaping with native planting.

11. Provision of appropriate directional signage and markings.

Plans & particulars of the proposed development will be on display from 17th May 2007 until 14th June 2007 at:

South Dublin County Council, County Hall, Tallaght, Dublin 24
Monday - Friday 9.30 am - 12.45 pm 2:00 pm - 4.30 pm

and
South Dublin County Council Civic Office, Cowalkin, Dublin 22

Monday - Friday 9.30 am - 12.45 pm 2:00 pm - 4.00 pm

Submissions or observations with respect to the proposed development dealing with the proper planning and sustainable development of the area, in which the development would be situated may be made in writing to:

Senior Executive Officer,
Development Department, South Dublin County Council, County Hall, Tallaght, Dublin 24.

Or by email to mhr@sdcc.ie

The latest date for the receipt of submissions or observations with regard to the matter is 5.00 pm on Thursday, 28th June 2007

It should be noted that the Freedom of Information Act applies to all records held by South Dublin County Council

SOUTH DUBLIN COUNTY COUNCIL	
Director of Economic Development	
PROJECT: PROPOSED GREEN PEDESTRIAN AND CYCLE ROUTE INCORPORATING 110KV DUCTING	
DETAIL PLANS SHEET 27 OF 27	
Date: 17th MAY 2007	Scale: 1:500, AS SHOWN
Drawn by: PT	Checked by: PT
05_106_227	