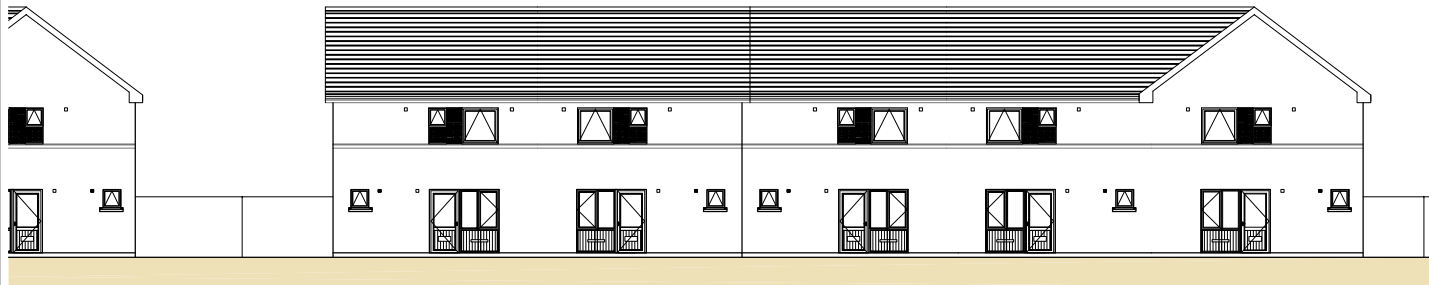
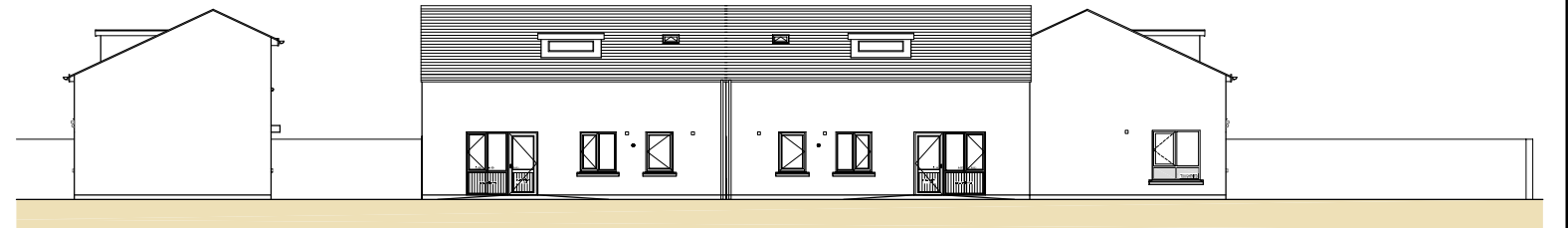


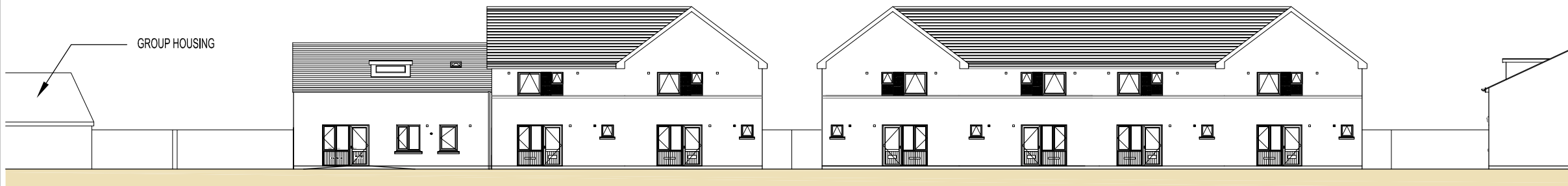
CONTIGUOUS EAST ELEVATION



CONTIGUOUS EAST ELEVATION CONTINUED



CONTIGUOUS SOUTH ELEVATION




CONTIGUOUS SOUTH ELEVATION CONTINUED

FINISHES

ROOF: Concrete roof tiles.
 WALLS:- Brickwork / self coloured render.
 WINDOWS:- Double glazed windows.
 BOUNDARY WALLS:- Brick / Rendered block / metal railings.
 All materials / colours / textures to be selected as part of procurement process.

**MAC UILLIAM INFILL ,
 FORTUNESTOWN LANE,
 TALLAGHT,
 DUBLIN 24.
 PART 8 - DECEMBER 2013**

REFER TO DRAWINGS 13024-P-06-17 FOR DETAILS OF HOUSE TYPES

 <p>ARCHITECTS' DEPARTMENT, COUNTY HALL, TALLAGHT, DUBLIN 24 TEL:-01-414 9000, FAX: 01-414 9209</p> <p>COUNTY ARCHITECT EDDIE CONROY, B.Arch., M.Sc.Arch., FRWH</p>				SCALE:- 1:250	PROJECT TITLE: INFILL HOUSING AT MAC UILLIAM	DRAWING NO:	REV.
				DATE:- DEC 2013	DRAWING TITLE: PROPOSED CONTIGUOUS REAR ELEVATIONS	13027-P-05	"
No.	DATE	REVISION	DRAWN:- RH	SENIOR ARCHITECT: PATRICK DE ROE	PROJECT ARCHITECT:		