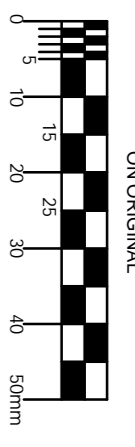


© COPYRIGHT OF THIS DRAWING IS RESERVED BY DBFL CONSULTING ENGINEERS. NO PART SHALL BE REPRODUCED OR TRANSMITTED WITHOUT THEIR WRITTEN PERMISSION.
ON ORIGINAL



NOTES

- DRIVEWAY
- PARKING BAYS
- CYCLE TRACK
- FOOTPATH
- SHAVED FOOTPATH AND CYCLETRACK
- GRASS VERGE / LANDSCAPE
- SPEED RAMP
- BOLLARDS

REV	DATE	DESCRIPTION	BY	CHKD
PLANNING				
DESIGNED	ASV	PREPARED	MCF	ASV
DATE	MARCH 2007	CHECKED	ASV	

Consulting Civil & Structural
DBFL
0 2 1 2 1 2 0 0 0

HERBERT HOUSE, HENSON ROW
DUBLIN 2, IRELAND
PHONE: +353 1 404000
FACSIMILE: +353 1 404005
www.dbfl.ie email: info@dbfl.ie

PROJECT
**ROWLAGH VILLAGE
IMPROVEMENT SCHEME**

DWG TITLE
**PART 8 PROPOSAL
APRIL 07**

CLIENT
**SOUTH DUBLIN
COUNTY COUNCIL**

SCALE 1:500 FILE REF: 062121-2000
DWG NO. 062121-2000

