

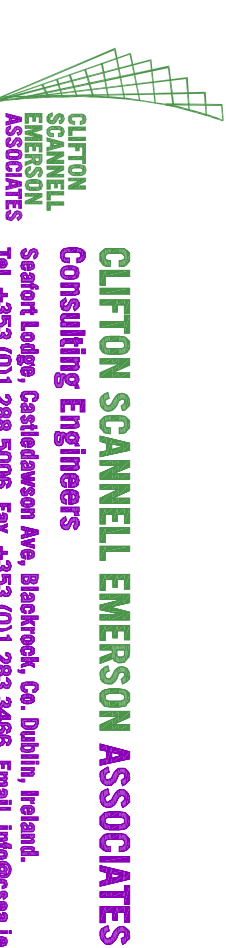


COMHAIRLE CHONTAE ATHA CLATH THEAS
SOUTH DUBLIN COUNTY COUNCIL

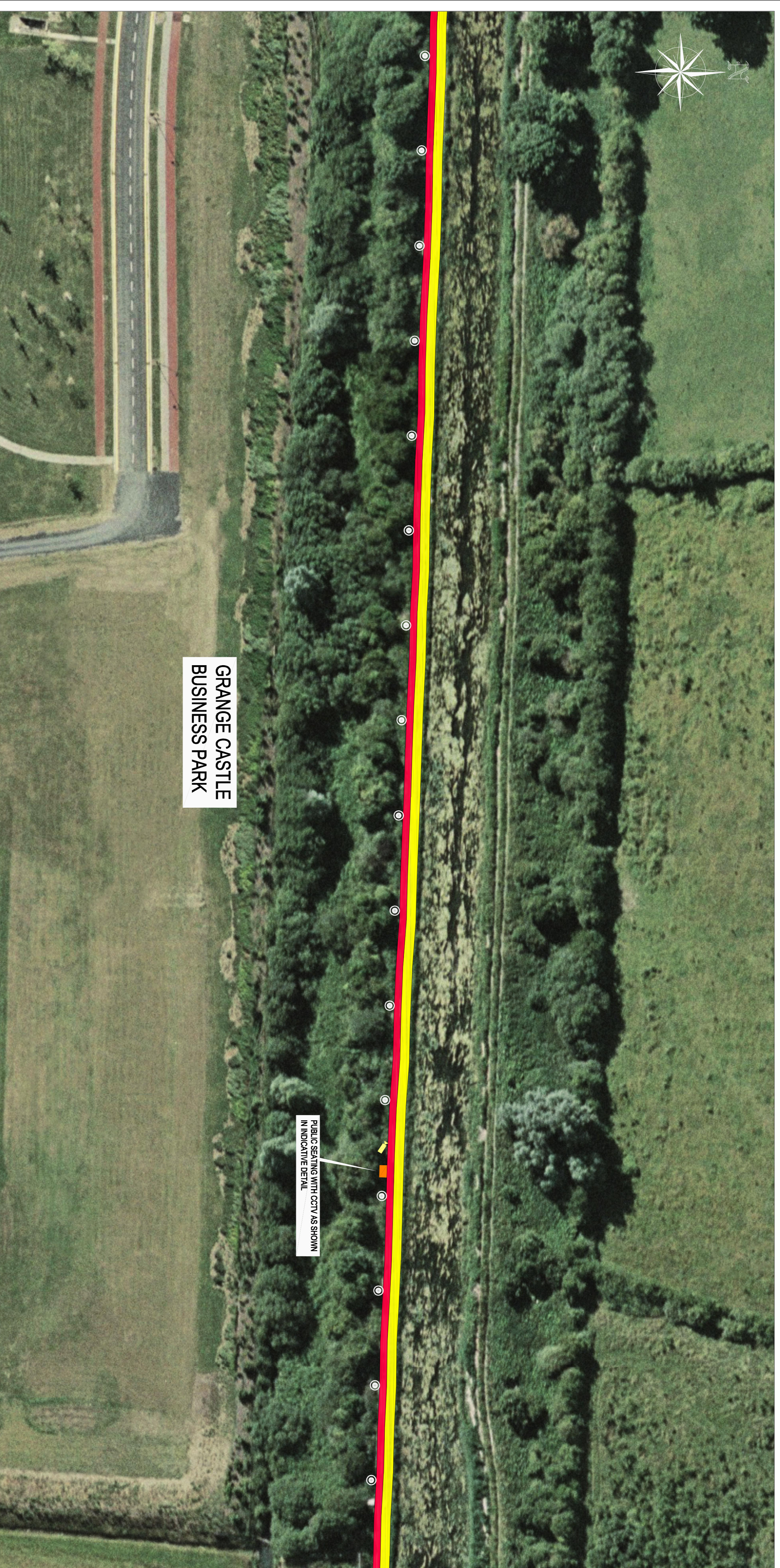


PROPOSED GREEN PEDESTRIAN AND CYCLE ROUTE ALONG THE GRAND CANAL FROM 12th LOCK TO INCHICORE INCORPORATING 110KV DUCTING

PUBLIC DISPLAY - SHEET 5 OF 27



CLIFTON SCANNELL EMERSON ASSOCIATES
Consulting Engineers
Saffery Lodge, Castlehaven Way, Salsbrook, Co. Dublin, Ireland.
Tel: +353 (0)1 288 5006 Fax: +353 (0)1 283 9489 Email: info@csa.ie



GRANGE CASTLE
BUSINESS PARK

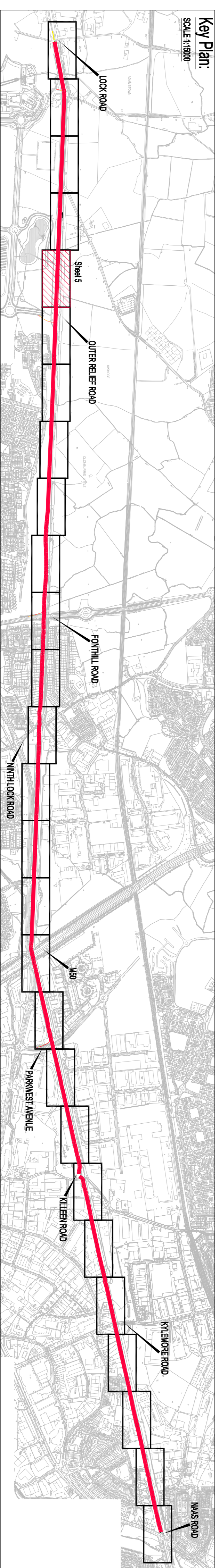
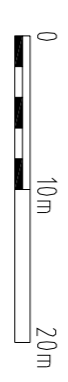
PUBLIC SEATING WITH CCTV AS SHOWN
IN INDICATIVE DETAIL

Legend :	
	Proposed Footpath
	Proposed cyclepath
	Proposed Public Lighting
	Proposed CCTV
	Proposed Public Seating

Comhairle Chontae Atha Cliath Theas
South Dublin County Council
Planning & Development Ad 2007
South Dublin County Council
Planning & Development Regulations 2007-2008 (Part 8 Procedure)
Display of proposed development for public comment
Proposed Green and Pedestrian Cycle Route along the Grand Canal from 12th Lock to Inchicore incorporating 110KV Ducting
Pursuant to the requirements of the above, notice is hereby given of the proposed construction by South Dublin County Council of the above scheme.

- The proposed works will comprise of the following:
1. The construction of 8450 m of pedestrian and cycleway along the southern bank of the Grand Canal from the 12th Lock to Inchicore to 12th Lock Road at Grange Castle.
 2. The proposed new pedestrian cycleway will be 2.0m wide and will run parallel and adjacent to a minimum 1.5m cycleway. The cycleway will widen to 2.0m where possible.
 3. The provision of public lighting and security CCTV along the entire length of the route.
 4. Provision of ducting for Public Lighting, CCTV, 110KV power cables and communication cables together with associated construction and piling structures.
 5. The provision of public amenity seating and litterbins along the route.
 6. Construction of designated fishing points along the route.
 7. The installation of access ramps to define levelled access to and from the route from Park West Avenue, Rathill Road and the Quire Road Road. Access will be maintained and improved at 12th Lock Road and 12th Lock Road.
 8. The provision of buscan (pedestrian and cycle) crossings at Kilim Lock Road and Kileen Road.
 9. The provision for future pedestrian bridges at key points along the route to link to future developments on lands to the north of the canal.
 10. The provision of upgraded landscaping with native planting.
 11. Provision of the appropriate directional signage and markings.
- Pins & particulars of the proposed development will be on display from 17th May 2007 until 14th June 2007 at:
- South Dublin County Council, County Hall, Tallaght, Dublin 24
Monday - Friday 9.30 am - 12.45 pm 2.00 pm - 4.30 pm
and
South Dublin County Council, Civic Office, Capelthorpe, Dublin 22
Monday - Friday 9.30 am - 12.45 pm 2.00 pm - 4.00 pm
Or by email to info@sdcc.ie
- The latest date for the receipt of submissions or observations with regard to this matter is 5.00 pm on Thursday, 28th June 2007.
- It should be noted that the Freedom of Information Acts applies to all records held by South Dublin County Council

Plan:
SCALE 1:500



SOUTH DUBLIN COUNTY COUNCIL	
CD	Director of Economic Development
PROJ	PROPOSED GREEN PEDESTRIAN AND CYCLE ROUTE ALONG THE GRAND CANAL FROM 12th LOCK TO INCHICORE INCORPORATING 110KV DUCTING
PROJ	DETAIL PLANS
PROJ	SHEET 5 OF 27
Drawn By	LT
Checked By	PT
Date	MAY 2007
Scale	1:500/AS SHOWN
Drawn No.	05_106_205