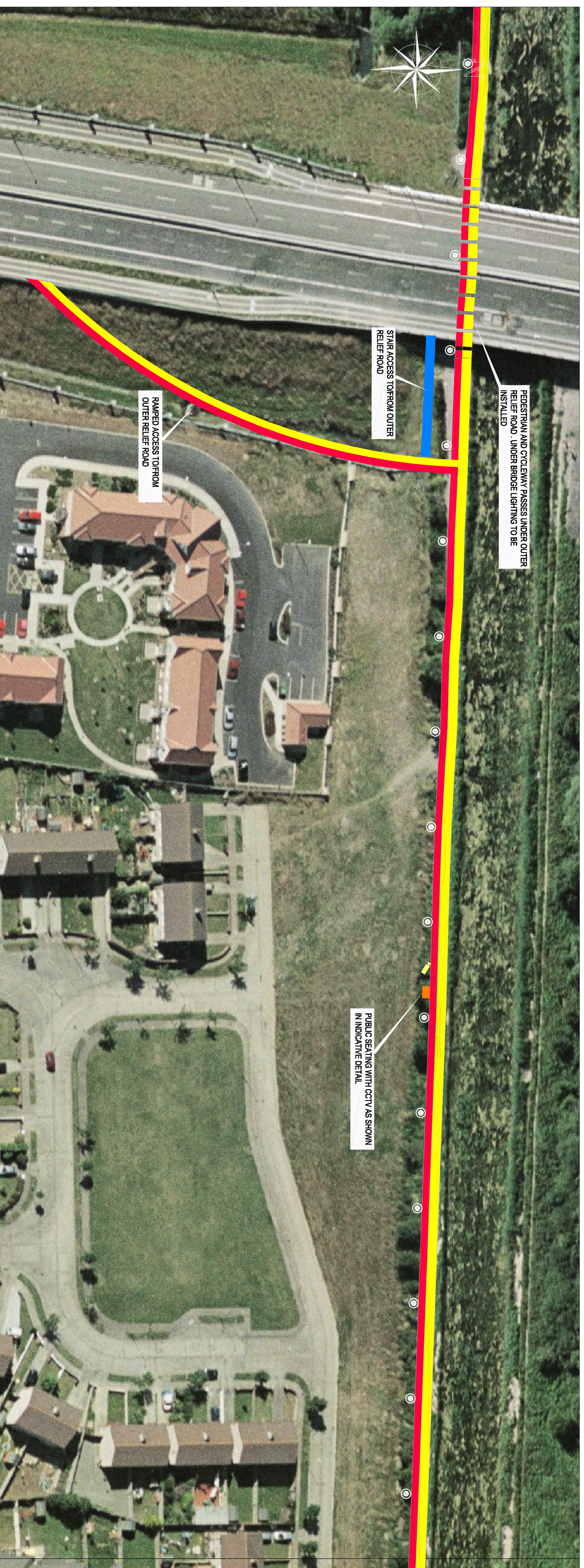


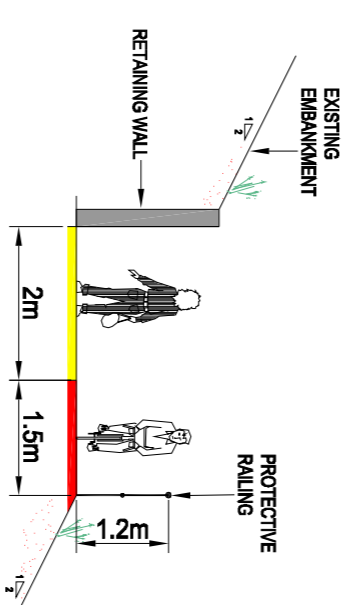


# PROPOSED GREEN PEDESTRIAN AND CYCLE ROUTE ALONG THE GRAND CANAL FROM 12TH LOCK TO INCHICORE INCORPORATING 110KV DUCTING

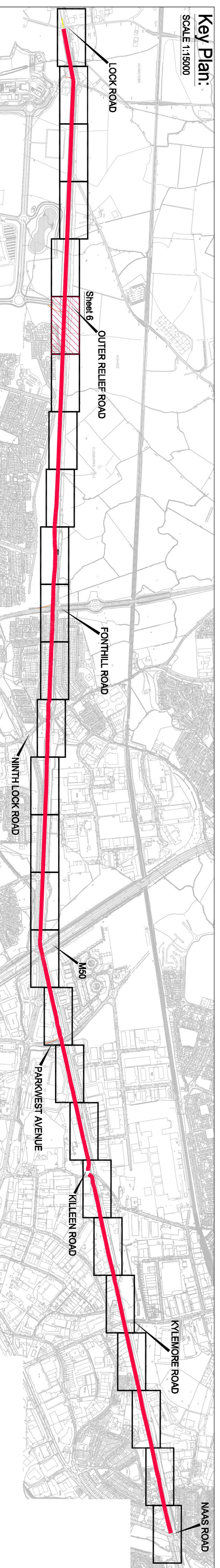
## PUBLIC DISPLAY - SHEET 6 OF 27



Plan:  
SCALE 1:500  
0 10m 20m



Typical Section Showing Access Ramp  
Not To Scale



Legend :

	Proposed Footpath
	Proposed cyclepath
	Proposed Public Lighting
	Proposed CCTV
	Proposed Public Seating
	Proposed Stair Access

Comhairle Chontae Atha Clath Theas  
South Dublin County Council

Planning & Development Regulations 2007-2013 (Part 8 Procedure)

Display of proposed development for public comment

Proposed Green and Pedestrian Cycle Route along the Grand Canal from 12th Lock to Inchicore incorporating 110kV Ducting

Pursuant to the requirements of the above, notice is hereby given of the proposed contribution by South Dublin County Council of the above scheme.

The proposed works will comprise of the following:

1. The construction of 8450 m of pedestrian and cycleway along the southern length of the Grand Canal from the Naas Road at Inchicore to 12th Lock Road at George Casey.
2. The proposed new pedestrian footpath will be 2.0m wide and will run parallel and adjacent to a minimum 1.5m cycleway. The cycleway will widen to 2.0m wherever possible.
3. The provision of public lighting and security CCTV along the entire length of the route.
4. Provision of ducting for Public Lighting, CCTV, 110kV Power cables and communication cables together with associated connection and pulling chambers.
5. The provision of public amenity seating and litterbins along the route.
6. Construction of designated linking paths along the route.
7. The construction of access ramps to allow ramped access to and from the route from Park West Avenue, Fonthill Road and the Outer Relief Road. Access will be maintained and improved at Killeen Road and Ninth Lock Road and 12th Lock Road.
8. The provision of bougain (pedestrian and cycle) crossings at Ninth Lock Road and Killeen Road.
9. The provision for future pedestrian bridges at key points along the route to link to future developments on lands to the north of the canal.
10. The provision of upgraded landscaping with native planting.

11. Provision of the appropriate directional signage and markings.

Plans & particulars of the proposed development will be on display from 17th May 2007 until 14th June 2007 at:

South Dublin County Council, County Hall, Tallaght, Dublin 24.

Monday - Friday 9.30 am - 12.45 pm 2.00 pm - 4.30 pm

and

South Dublin County Council, Civic Office, Christchurch, Dublin 22.

Monday - Friday 9.30 am - 12.45 pm 2.00 pm - 4.00 pm

Submissions or observations with respect to the proposed development dealing with the proper planning and sustainable development of the area, in which the development would be situated may be made in writing to the:

Senior Executive Officer,  
Development Department, South Dublin County Council, County Hall, Tallaght, Dublin 24.

O by email to: [mehr@sdcc.ie](mailto:mehr@sdcc.ie)

The latest date for the receipt of submissions or observations with regard to this matter is 5.00 pm on Thursday, 28th June, 2007

It should be noted that the Freedom of Information Act applies to all records held by South Dublin County Council

Sheet	SOUTH DUBLIN COUNTY COUNCIL		
CD	Director of Economic Development		
PROJ	PROPOSED GREEN PEDESTRIAN AND CYCLE ROUTE ALONG THE GRAND CANAL FROM 12th LOCK TO INCHICORE INCORPORATING 110KV DUCTING		
DETAIL	DETAIL PLANS		
DATE	DATE	DATE	DATE
Drawn By	LT	Scale	1:500/AS SHOWN
Checked by	PT	Scale	1:500/AS SHOWN
Drawn No	05_106_206	Scale	1:500/AS SHOWN