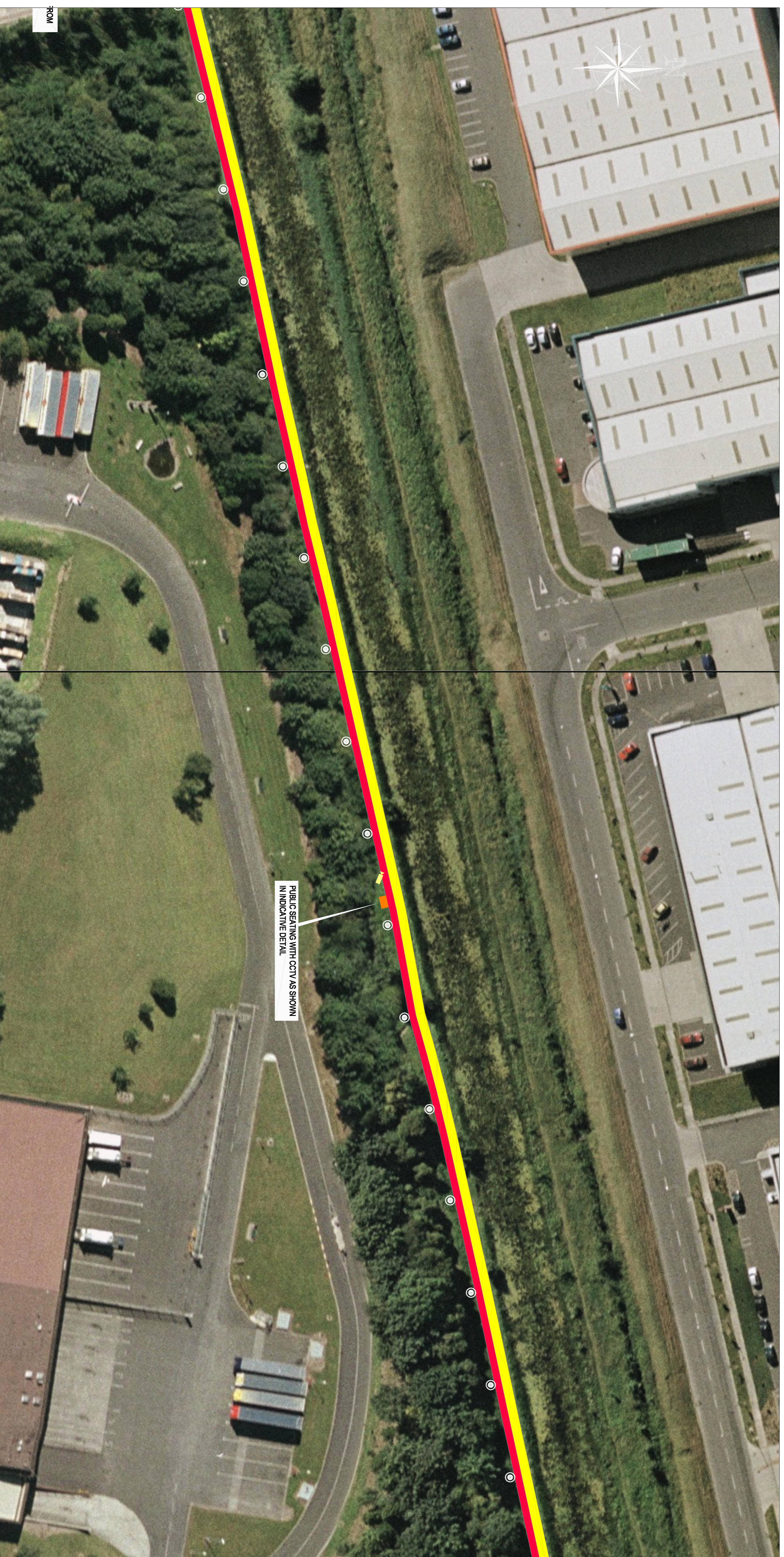
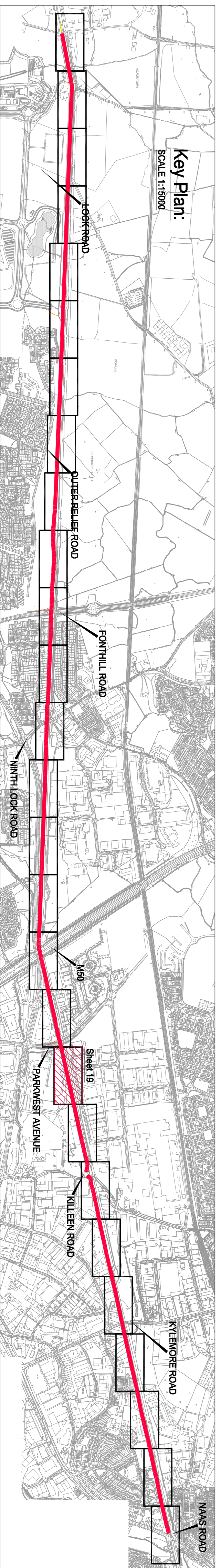
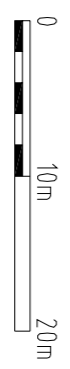


PROPOSED GREEN PEDESTRIAN AND CYCLE ROUTE ALONG THE GRAND CANAL FROM 12th LOCK TO INCHICORE INCORPORATING 110KV DUCTING

PUBLIC DISPLAY - SHEET 19 OF 27



Plan:
SCALE 1:500



Legend :

	Proposed Footpath
	Proposed cyclepath
	Proposed Public Lighting
	Proposed CCTV
	Proposed Public Seating

Comhairle Chontae Atha Cliath Theas
Planning & Development Act 2000
South Dublin County Council
Planning & Development Regulations 2001-2003 (Part 8 Procedure)
Display of proposed development for public comment
Proposed Green and Pedestrian Cycle Route along the Grand Canal from 12th Lock to Inchicore incorporating 110kV Ducting
Pursuant to the requirements of the above, notice is hereby given of the proposed construction by South Dublin County Council of the above scheme.

The proposed works will comprise of the following:

1. The construction of 8450 m of pedestrian and cycleway along the southern bank of the Grand Canal from the Naas Road at Inchicore to 12th Lock Road at George's Canal.
 2. The proposed new pedestrian cycleway will be 2.0m wide and will run parallel and adjacent to a minimum 1.5m cycleway. The cycleway will widen to 2.0m where possible.
 3. The provision of public lighting and security CCTV along the entire length of the route.
 4. Provision of ducting for Public Lighting, CCTV, 110kV power cables and communication cables together with associated connection and pulling drums.
 5. The provision of public amenity seating and benches along the route.
 6. Construction of designated waiting points along the route.
 7. The construction of access ramps to allow unimpeded access to and from the route from Park West Road and Naas Road and access will be maintained and improved at Naas Road and Ninth Lock Road and 12th Lock Road.
 8. The provision of boulevards (pedestrian and cycle) crossings at Ninth Lock Road and Killeen Road.
 9. The provision for future pedestrian bridges at key points along the route to link to future developments on lands to the north of the canal.
 10. The provision of upgraded landscaping with native plantings.
 11. Provision of the appropriate directional signage and markings.
- Plans & particulars of the proposed development will be on display from 17th May 2007 until 14th June 2007 at:
South Dublin County Council, County Hall, Tallaght, Dublin 24.
Monday - Friday 9.30 am - 12.45 pm 2.00 pm - 4.30 pm
and
South Dublin County Council, Civic Office, Cavendish, Dublin 22.
Monday - Friday 9.30 am - 12.45 pm 2.00 pm - 4.00 pm
Submissions or observations with respect to the proposed development dealing with the proper planning and sustainable development of the area, in which the development would be situated may be made in writing to the:
Senior Executive Officer,
Development Department, South Dublin County Council, County Hall, Tallaght, Dublin 24.
Or by email to: meish@southdco.ie
The latest date for the receipt of submissions or observations with regard to this matter is 5.00 pm on Thursday, 26th June, 2007.
It should be noted that the Freedom of Information Acts applies to all records held by South Dublin County Council.

SOUTH DUBLIN COUNTY COUNCIL	
Chief Executive	Director of Economic Development
PROPOSED GREEN PEDESTRIAN AND CYCLE ROUTE ALONG THE GRAND CANAL FROM 12th LOCK TO INCHICORE INCORPORATING 110kV DUCTING	
DETAIL PLANS	
SHEET 19 OF 27	
Drawn By	LT
Checked by	PT
Date	MAY 2007
Scale	1:500/AS SHOWN
Draw No.	05_106_219