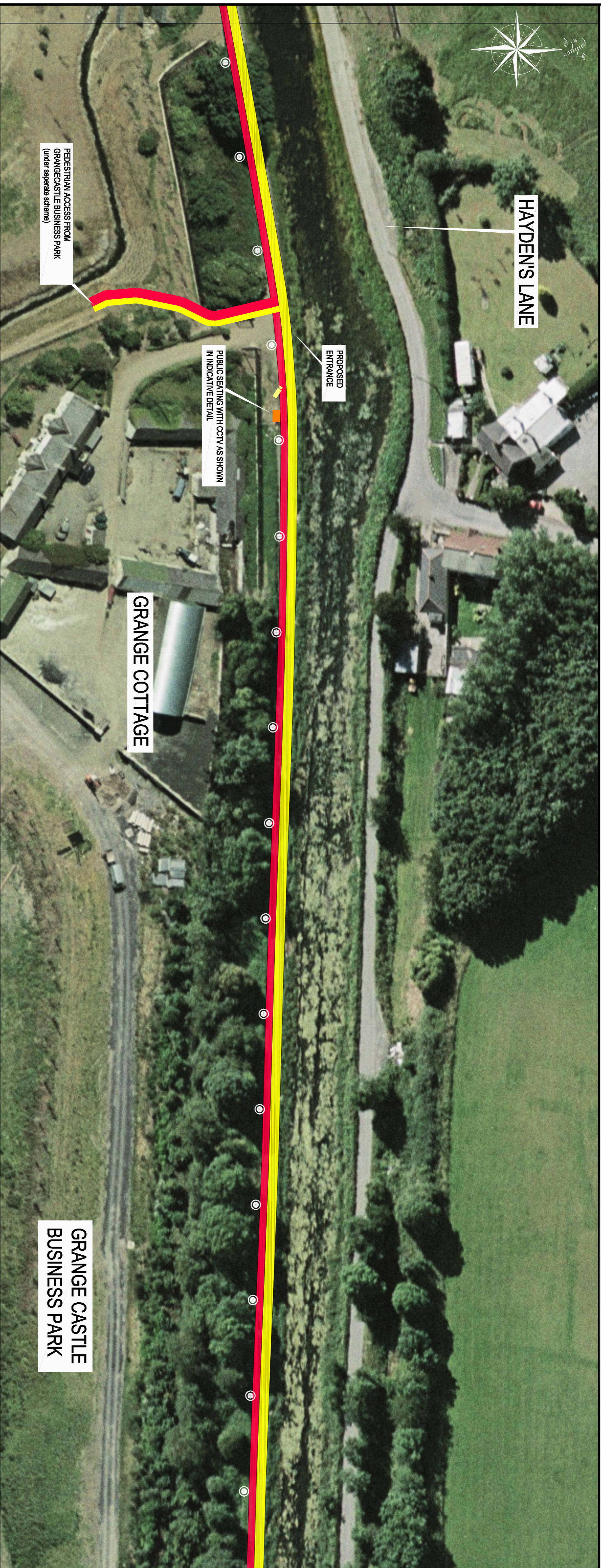


PROPOSED GREEN PEDESTRIAN AND CYCLE ROUTE ALONG THE GRAND CANAL FROM 12th LOCK TO INCHICORE INCORPORATING 110KV DUCTING

PUBLIC DISPLAY - SHEET 2 OF 27



Legend :

	Proposed Footpath
	Proposed Cyclepath
	Proposed Public Lighting
	Proposed CCTV
	Proposed Public Seating

- Comhairle Chontae Atha Glath Theas
South Dublin County Council
- Planning & Development Regulations 2007-2013 (Part 8 Procedure)
Display of proposed development for public comment
Proposed Green and Pedestrian Cycle Route along the Grand Canal from 12th Lock to Inchicore incorporating 110kV Ducting
Pursuant to the requirements of the above, notice is hereby given of the proposed contribution by South Dublin County Council of the above scheme.
- The proposed works will comprise of the following:
1. The construction of 8450 m of pedestrian and cycleway along the southern length of the Grand Canal from the Naas Road at Inchicore to 12th Lock Road at Grange Castle.
 2. The proposed new pedestrian footpath will be 2.0m wide and will run parallel and adjacent to a minimum 1.5m cycleway, the system will widen to 2.5m where possible.
 3. The provision of public lighting and security CCTV along the entire length of the route.
 4. Provision of ducting for Public Lighting, CCTV, 110kV Power cables and communication cables together with associated connection and pulling chambers.
 5. The provision of public amenity seating and litterbins along the route.
 6. Construction of designated fishing points along the route.
 7. The construction of access ramps to allow impaired access to and from the route from Park West Avenue, Fonthill Road and the Outer Relief Road. Access will be maintained and improved at Killen Road and Ninth Lock Road and 12th Lock Road.
 8. The provision of busan (pedestrian and cycle) crossings at Ninth Lock Road and Killen Road.
 9. The provision for future pedestrian bridges at key points along the route to link to future developments on lands to the north of the canal.
 10. The provision of upgraded landscaping with native planting.
 11. Provision of the appropriate directional signage and markings.

Plans & particulars of the proposed development will be on display from 17th May 2007 until 14th June 2007 at:

South Dublin County Council, County Hall, Tallaght, Dublin 24.
Monday - Friday 9.30 am - 4.30 pm

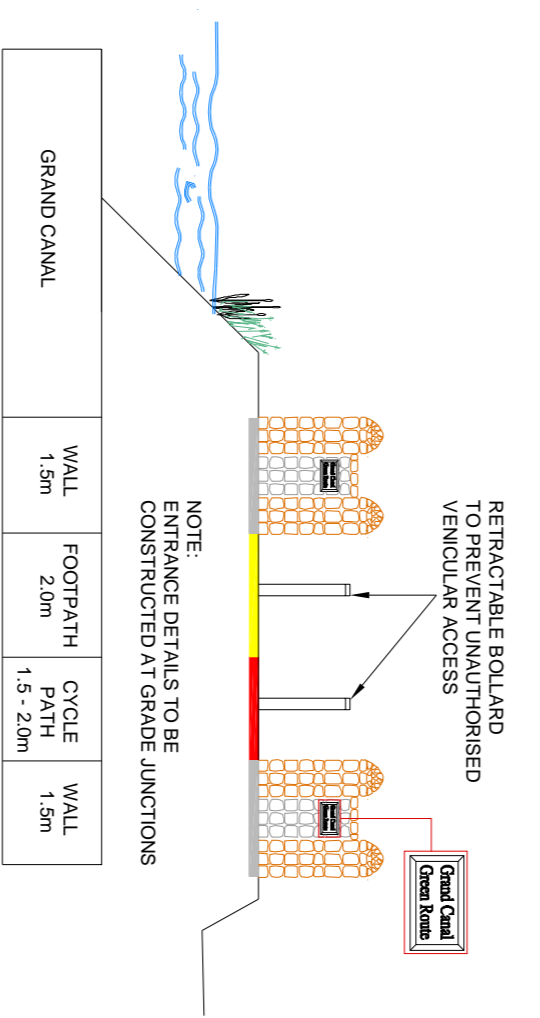
and
South Dublin County Council Civic Office, O'Connell, Dublin 22.
Monday - Friday 9.30 am - 12.45 pm 2.00 pm - 4.00 pm

Submissions or observations with respect to the proposed development dealing with the proper planning and sustainable development of the area, in which the development would be situated may be made in writing to the:

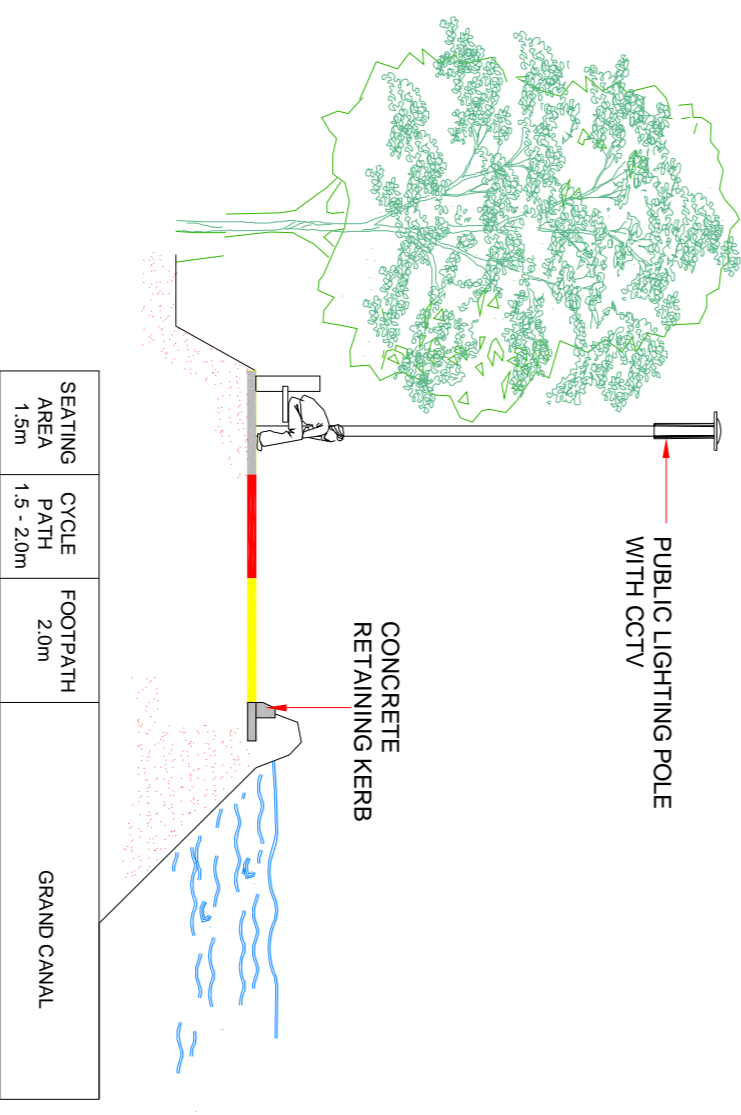
Senior Executive Officer
Development Department, South Dublin County Council, County Hall, Tallaght, Dublin 24.
Or by email to: me@sdcc.ie
The stated date for the receipt of submissions or observations with regard to this matter is 5.00 pm on Thursday, 28th June, 2007

It should be noted that the Freedom of Information Act applies to all records held by South Dublin County Council

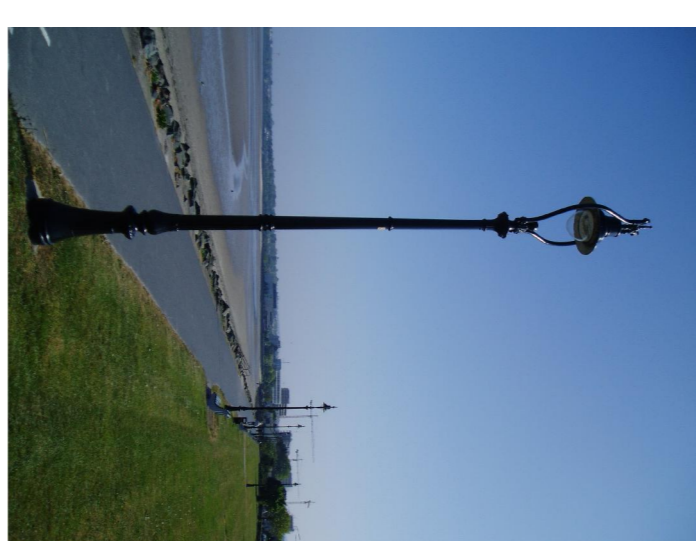
Plan:
SCALE 1:500
0 10m 20m



Elevation showing Typical Entrance Detail
Not To Scale



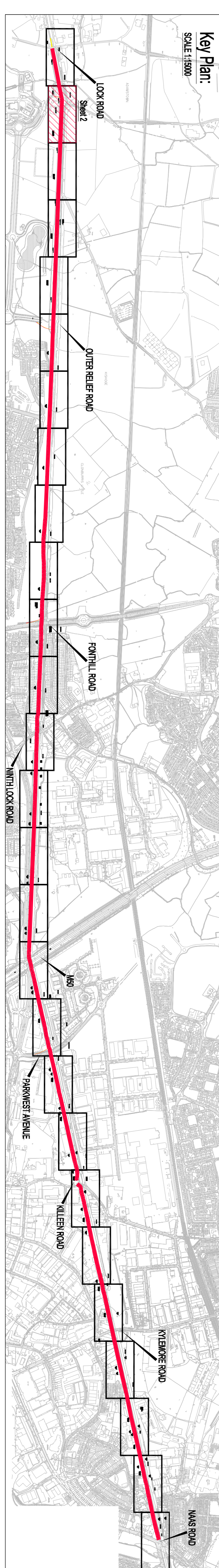
Typical Cross Section where water level is higher than footpath
Not To Scale



Typical Detail - Public Lighting
Not To Scale



Typical Detail - Seating & Bin
Not To Scale



Key Plan:
SCALE 1:18000

SOUTH DUBLIN COUNTY COUNCIL	
Director of Economic Development	
PROPOSED GREEN PEDESTRIAN AND CYCLE ROUTE ALONG THE GRAND CANAL FROM 12th LOCK TO INCHICORE INCORPORATING 110KV DUCTING	
DETAIL PLANS	
SHEET 2 OF 27	
Drawn by: LT	Date: MAY 2007
Checked by: PT	Scale: 1:500/AS SHOWN
Draw No: 05_106_202	