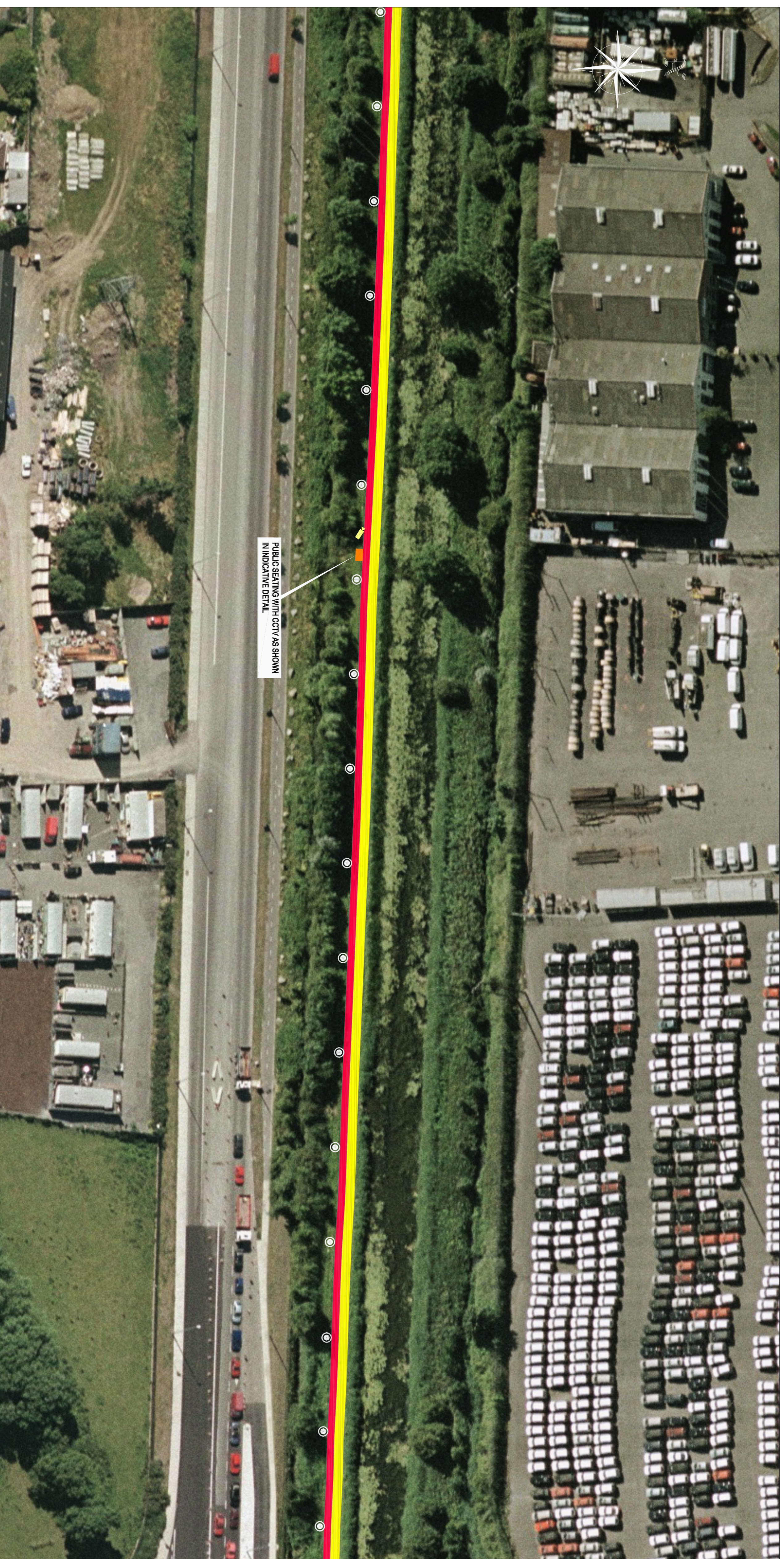




# PROPOSED GREEN PEDESTRIAN AND CYCLE ROUTE ALONG THE GRAND CANAL FROM 12th LOCK TO INCHICORE INCORPORATING 110KV DUCTING

## PUBLIC DISPLAY - SHEET 15 OF 27



Legend :	
	Proposed Footpath
	Proposed cyclepath
	Proposed Public Lighting
	Proposed CCTV
	Proposed Public Seating

**Comhairle Chontae Atha Cliath Theas**  
South Dublin County Council  
Planning & Development Regulations 2001-2003 (Part 8 Procedure)  
Design of proposed development for public comment  
Proposed Green and Pedestrian Cycle Route along the Grand Canal from 12th Lock to Inchicore incorporating 110KV Ducting  
Pursuant to the requirements of the above, notice is hereby given of the proposed construction by South Dublin County Council of the above scheme.

The proposed works will comprise of the following:

1. The construction of 8450 m of pedestrian and cycleway along the southern length of the Grand Canal from the 12th Lock to Inchicore to 12th Lock Road at George's Dock.
2. The proposed new pedestrian footpath will be 2.0m wide and will run parallel and adjacent to a minimum 1.5m cycleway. The cycleway will widen to 2.0m where possible.
3. The provision of public lighting and security CCTV along the entire length of the route.
4. Provision of ducting for Public Lighting, CCTV, 110KV power cables and communication cables together with associated connection and jacking chambers.
5. The provision of public amenity seating and litterbins along the route.
6. Construction of designated fishing points along the route.
7. The acquisition of access rights to allow unimpeded access to and from the route from Park West Avenue, Scallan Road and the Old Retail Road, access will be maintained and improved at 12th Lock Road and 12th Lock Road.
8. The provision of founan (pedestrian and cycle) crossings at 12th Lock Road and Kileen Road.
9. The provision for future pedestrian bridges at key points along the route to link to future developments on sites to the north of the canal.
10. The provision of upgraded landscaping with native planting.
11. Provision of the appropriate directional signage and markings.

Plans & particulars of the proposed development will be on display from 17th May 2007 until 14th June 2007 at:

South Dublin County Council, County Hall, Tallaght, Dublin 24.  
Monday - Friday 9.30 am - 12.45 pm 2.00 pm - 4.30 pm  
and  
South Dublin County Council, Civic Office, Condonia, Dublin 22.  
Monday - Friday 9.30 am - 12.45 pm 2.00 pm - 4.00 pm

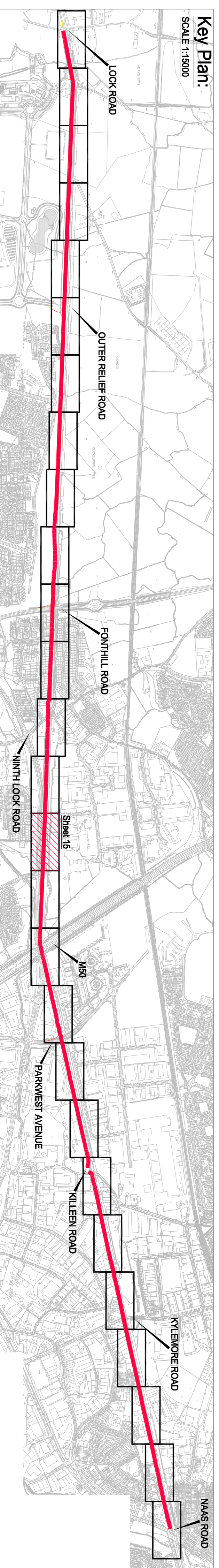
Submissions of observations with regard to the proposed development dealing with the proper planning and sustainable development of the area, in which the development would be situated may be made in writing to the:

Senior Executive Officer,  
Development Department, South Dublin County Council, County Hall, Tallaght, Dublin 24,  
Or by email to: mehh@sdcc.ie

The latest date for the receipt of submissions or observations with regard to the matter is 5.00 pm on Thursday, 28th June 2007.

It should be noted that the Freedom of Information Acts applies to all records held by South Dublin County Council

Plan:  
SCALE 1:500



SOUTH DUBLIN COUNTY COUNCIL	
Client	SOUTH DUBLIN COUNTY COUNCIL
CD	Director of Economic Development
PROPOSED GREEN PEDESTRIAN AND CYCLE ROUTE ALONG THE GRAND CANAL FROM 12th LOCK TO INCHICORE INCORPORATING 110KV DUCTING	
Project	DETAIL PLANS
Drawn By	LT
Checked by	PT
Date	MAY 2007
Scale	1:500;AS SHOWN
Draw No	05_106_215