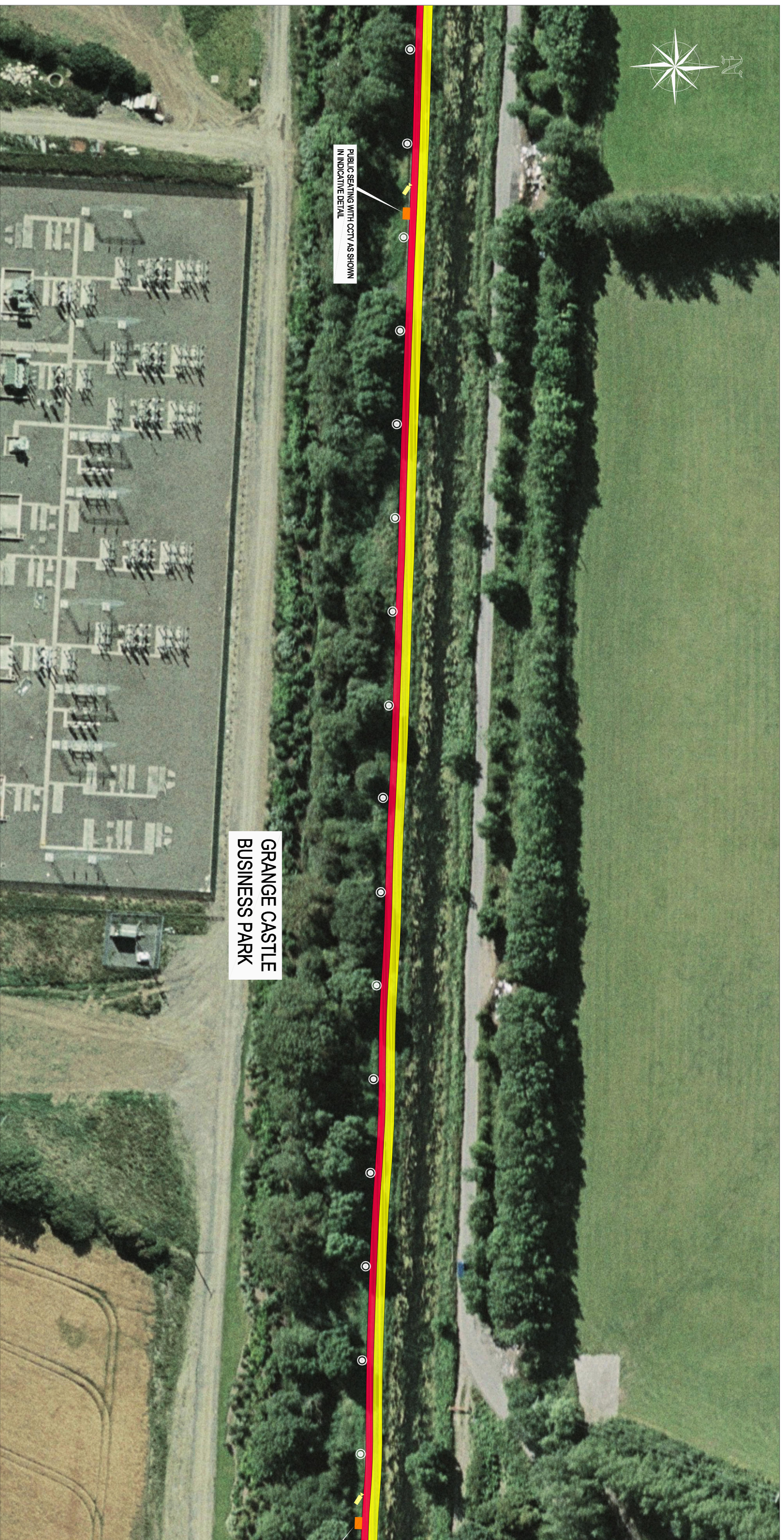




PROPOSED GREEN PEDESTRIAN AND CYCLE ROUTE ALONG THE GRAND CANAL FROM 12th LOCK TO INCHICORE INCORPORATING 110KV DUCTING

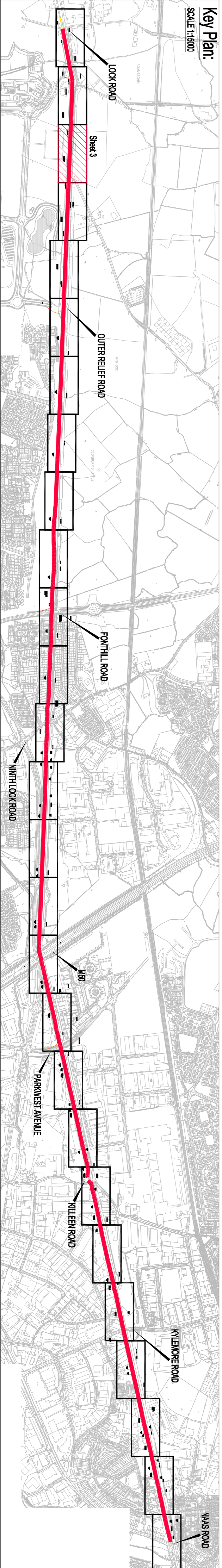
PUBLIC DISPLAY - SHEET 3 OF 27



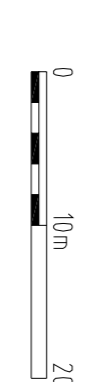
Legend :

	Proposed Footpath
	Proposed Cyclepath
	Proposed Public Lighting
	Proposed CCTV
	Proposed Public Seating

- The proposed works will comprise of the following:
1. The construction of 8450 m of pedestrian and cycleway along the southern length of the Grand Canal from the Neas Road at Inchicore to 12th Lock Road at Grange Castle.
 2. The proposed new pedestrian footpath will be 2.0m wide and will run parallel and adjacent to a minimum 1.5m cycleway. The cycleway will widen to 2.0m where possible.
 3. The provision of public lighting and security CCTV along the entire length of the route.
 4. Provision of ducting for Public Lighting CCTV, 110kV power cables and communication cables together with associated connection and pulling operations.
 5. The provision of public amenity seating and litterbins along the route.
 6. Construction of designated waiting points along the route.
 7. The construction of access ramps to allow improved access to and from the route from Park West Avenue, Fonthill Road and the Oiler Field Road. Access will be maintained and improved at Killian Road and North Lock Road and 12th Lock Road.
 8. The provision of buoys (pedestrian and cycle) crossings at North Lock Road and Killian Road.
 9. The provision for future pedestrian bridges at key points along the route to link to future developments on land to the north of the canal.
 10. The provision of upgraded landscaping with native planting.
 11. Provision of the appropriate directional signage and markings.
- Plans & particulars of the proposed development will be on display from 7th May 2007 until 14th June 2007 at:
- South Dublin County Council County Hall, Tallaght, Dublin 24
Monday - Friday 9.30 am - 12.45 pm 2.00 pm - 4.30 pm
- and
- South Dublin County Council Civic Office, Connolly, Dublin 22
Monday - Friday 9.30 am - 12.45 pm 2.00 pm - 4.00 pm
- Submissions or observations with respect to the proposed development dealing with the proper planning and sustainable development of the area, in which the development would be situated may be made in writing to the:
- Senior Executive Officer,**
Development Department, South Dublin County Council, County Hall, Tallaght, Dublin 24,
Or by email to me@sdcc.dublincoco.ie
- The latest date for the receipt of submissions or observations with regard to the matter is 5.00 pm on Thursday, 28th June, 2007
- It should be noted that the Freedom of Information Acts applies to all records held by South Dublin County Council.



Plan:
SCALE 1:500



Sheet	SOUTH DUBLIN COUNTY COUNCIL		
CD	Director of Economic Development		
PROJECT	PROPOSED GREEN PEDESTRIAN AND CYCLE ROUTE ALONG THE GRAND CANAL FROM 12th LOCK TO INCHICORE INCORPORATING 110KV DUCTING		
DETAIL PLANS	SHEET 3 OF 27		
Drawn By	LT	Date	MAY 2007
Checked by	PT	Scale	1:500/AS SHOWN
Draw No	05_106_2003		